



MORRISON HERSHFIELD
Suite 600, 235 Yorkland Boulevard
Toronto, Ontario M2J 1T1
Tel: 416 499 3110
Fax: 416 499 9658
morrisonhershfield.com

Project Number: 1104036.00

Project Title: WAINFLEET WIND ENERGY PROJECT

Report: 003-R04-1104036

Title: CONSTRUCTION PLAN REPORT

Client: IPC Energy
2550 Argentia Road Suite 105
Mississauga, Ontario
L5N 5R1

Date: April, 2012
(Draft for public and agency review)

Prepared by Morrison Hershfield Limited



Table of Contents

1.0	Project Overview	1
1.1.	General Project Schedule	2
2.0	Construction Details	3
1.1.	Construction Schedule.....	4
2.1.	Surveying and Geotechnical Study	4
2.1.1.	Roads and Land Clearing	5
2.1.2.	Turbine Site and Crane Pad Construction.....	7
2.2.	Delivery of Equipment	8
2.3.	Foundation Construction	8
2.4.	Turbine Assembly and Installation	10
2.5.	Interconnection from Switching Station.....	10
2.6.	Electrical Switching Station	11
2.7.	Electrical Tapline and Distribution System	11
2.8.	Site Clean-up and Restoration	11
2.9.	Temporary Storage Facilities.....	11
2.10.	Turbine Commissioning.....	12
2.11.	Traffic Management.....	12
3.0	Construction Equipment.....	13
3.1	Required Turbine Components and Construction Materials	13
4.0	Additional Procedures	15
4.1	Disposal of Construction Materials	15
4.2	Waste Management	15
4.2.1	Solid Waste.....	15
4.2.2	Liquid Waste.....	16
4.3	Abandonment Procedures	16
4.4	Consultation and Construction	16
4.5	Emergency Response and Communications Plan	16
5.0	Environmental Impacts and Mitigation of Construction	17
6.0	Environmental Monitoring.....	18
6.1	Leadership and Management Structures.....	18
6.2	Environmental Effects Monitoring Plan (EEMP)	18
6.3	Project Commissioning and Scheduling.....	19
6.4	Purpose and Objectives of the EEMP	19
7.0	Summary	20
8.0	Consultant Legal Statement	21

CONSTRUCTION PLAN REPORT

Tables

Table 1-A: Coordinates of Each Turbine

Table 1-B: General Project Schedule

Table 1-C: Description of Each Phase

Table 1-D: Approximate Construction Schedule

Table 1-E: Typical Equipment and Noise Emitted During Construction

Appendices

Appendix A: Geotechnical Investigation

Appendix B: Preliminary Transportation Survey

REA Package Reference Tabs

Tab 1: Study Area Map

Tab 2: Site Plan

Tab 3: Land-Use Maps

1.0 Project Overview

The Wainfleet Wind Energy Project (“the Project”) Construction Plan Report is prepared in accordance with the requirements of the Ministry of the Environment’s Renewable Energy Approvals Regulation (“the Regulation”), O.Reg 359/09, specifically with consideration of *Item 1* of the requirements outlined in *Table 1* of the Regulation.

The proposed Wainfleet Wind Energy Project is to be situated in the Township of Wainfleet, in Niagara Region of Ontario. The Project would consist of five (5) Vestas V-100 1.8 megawatt wind turbines producing a nameplate capacity of 9.0 megawatts. If approved, the wind turbines would be erected for the purpose of capturing energy from the wind, a renewable resource, and converting it into clean, useable electricity. This electricity will be transported to consumers via interconnection facilities, including transformers and distribution lines. The footprint of these facilities is captured and described in reports prepared for this Renewable Energy Approval (REA).

The proposed undertaking includes three (3) phases: 1) Construction; 2) Operation and Maintenance, and 3) Decommissioning of the facility and its associated infrastructure. Each of these phases is described in separate reports.

Infrastructure for the purposes of the REA and this Project includes turbines, foundations, access roads, underground collector system, switching station, temporary staging areas, and an operations/SCADA building. Low voltage step-up transformers are found inside each wind turbine’s nacelle housing and therefore pad mounted transformers are not part of the footprint of this facility. The project location including all associated infrastructure will be located as described in project mapping (refer to Site Plan and Land Use Mapping)

This report will detail the construction activities, the duration, the environmental effects, and mitigation measures. The wind turbine locations are presented in **Table 1-A**. The general project schedule is found in **Table 1-B**, with the description of each phase of the project found in **Table 1-C**.

Table 1-A: Coordinates of Each Turbine (NAD 83, UTM Zone 17)		
Turbine Number	Latitude	Longitude
1	631359	4751252
2	631758	4750750
3	631911	4750551
4	632750	4748389
5	632706	4748817

1.1. General Project Schedule

Table 1-B provides an overview of key project activities and projected dates.

Table 1-B: General Project Schedule	
Activity	Date (Month, Year)
Begin Environmental Field Surveys	October, 2009
Begin Renewable Energy Approval	April, 2010
Submit Renewable Energy Approval Application	June, 2012
Obtain Renewable Energy Approval	January, 2013
Commence Construction	March, 2013
Commercial Operation	August, 2013

2.0 Construction Details

The activities required for the construction phase will be discussed in this section on a per turbine basis. All activities found listed under “Construction” in **Table 1-C** will be described in this report.

The project is expected to begin construction during **March, 2013** pursuant to REA approval and subject to the requirements of government agencies. Construction activities will be initiated and completed at each turbine location between then and **September, 2013**. All construction work and associated activities will meet or exceed local regulations and standards (such as the Ontario Building Code and Ontario Electrical Safety Code, etc.)

This phase of the project includes the following activities:

- Surveying and geotechnical work
- Access road construction and modification
- Delivery of equipment
- Foundation construction
- Tower and turbine assembly and installation
- Interconnection from turbines to switching station (Construction of Underground Collector System)
- Switching Station Construction
- Testing and commissioning of switching station and collection systemTurbine testing and commissioning
- Site clean-up and restoration

The scope of this project is summarized in **Table 1-C**, which provides each phase (Construction, Operation and Maintenance, and Decommissioning) with the corresponding activities that will be undertaken. The construction phase is most relevant to this report; however, the Operations and Maintenance, and Decommissioning phases are presented to demonstrate the relationships among all phases of the project.

Table 1-C: Description of Each Phase	
Phase	Activities
Construction	<ul style="list-style-type: none"> • Surveying and geotechnical work • Access road construction and modification • Delivery of equipment • Foundation construction • Tower and turbine assembly and installation • Interconnection from turbines to Switching Station • Switching Station construction • Turbine commissioning • Site clean-up and restoration

Operation & Maintenance	<ul style="list-style-type: none"> • Environmental effects monitoring • Turbine operation and electricity production • Annual and semi-annual maintenance • Repairs, as required • Community relations
Decommissioning	<ul style="list-style-type: none"> • Land clearing • Road construction/modification • Removal of turbines and ancillary equipment • Site restoration and rehabilitation

1.1. Construction Schedule

The approximate construction schedule is presented in **Table 1-D**. The schedule provided is based upon a successful REA approval by **January, 2013**. This schedule may be adapted as dictated by regulatory approvals and permit requirements. Additional timing requirements with respect to significant natural features and waterbodies has been provided in the Environmental Impact Study and Water Assessment reports.

Table 1-D: Approximate Construction Schedule	
Activity	Date
Surveying and geotechnical	March, 2013
Building Permit	March, 2013
Access Road Construction and Modification	April, 2013
Foundation Construction	April, 2013
Electrical Tapline Construction	May, 2013
Delivery of Turbines	May, 2013
Tower and Turbine Assembly and Installation	June, 2013
Switching Station Construction	June, 2013
Interconnection of Turbines to Switching Station	July, 2013
Turbine Testing and Commissioning	August, 2013
Site Restoration and Clean-up	September, 2013

2.1. Surveying and Geotechnical Study

A land survey will be completed prior to construction by a registered Ontario Land Surveyor to identify the exact locations and positions of turbines, access roads, interconnection routes (i.e. underground collector system), switching station, temporary crane pads and laydown areas.

A geotechnical survey involving bore-hole samples and in situ testing will be undertaken before the construction of the tower foundations. It is anticipated that these studies will take place during **March, 2013**. A preliminary geotechnical investigation was completed by Soil-Mat Engineering & Consultants Ltd. to confirm the general site specific sub-surface conditions within the project study area. The findings of this preliminary assessment are provided in Appendix A.

CONSTRUCTION PLAN REPORT

A Stage 1 Archaeological Assessment of the study area was undertaken by A.M. Archaeological Associates Limited (AMA) in **May, 2010**. The Stage 1 assessment determined that the study area possessed potential for significant archaeological remains. Based upon this assessment, AMA was retained to undertake Stage 2 Archaeological Assessments. The Stage 2 studies was completed in **August, 2010, October, 2011, and March 2012**. These reports have been forwarded to the Ministry of Tourism and Culture (MTC) for approval. During the Stage 2 Archaeological Assessment all of the proposed turbine locations were determined to have low potential for archaeological remains.

If, during construction, deeply buried archaeological remains are discovered, the proponent will cease construction and immediately notify MTC and the Niagara Regional Police (*if human remains are found*).

2.1.1. Roads and Land Clearing

Access roads are purpose built roads that connect the site entrance to the existing municipal road. Access roads will be built to provide the required access for construction and transportation vehicles to each turbine and substation site throughout the construction, operation/maintenance, and decommissioning phases of the project. All turbine locations and corresponding access roads are proposed on open agricultural lots; therefore, minimal vegetation clearing will be required. The underground collector system will follow the proposed access roads when on private property and be contained within the municipal right-of-way, where possible. The Natural Heritage Assessment (NHA), Environmental Impact Study (EIS), and Waterbodies reports prepared for the Wainfleet Wind Energy Project documents the pre-existing conditions of the land, air, and water within 120 metres of the project location and provides appropriate mitigation to be implemented during construction to minimize and avoid negative environmental effects.

Clearing will be required for each turbine location, laydown areas, temporary staging areas, switching station, and for the construction of access roads and underground collector system. Areas associated with these project components, where land clearing is required are identified in project **Land Use and Site Plan Mapping** and further described in the Design and Operations Report. At each location, gravel surfaced roads will be constructed. The roads will be designed and constructed to support heavy equipment and vehicles required for the transportation, construction and erection of the project's turbines. Access roads will be a maximum width of 7 metres, including shoulders.

Road construction includes the excavation of topsoil and some subsoil and installation of geotextile and/or aggregate materials. Excavated materials, such as topsoil and subsoil will be stored separately and will be reused as appropriate during post-construction restorations. The results of the final geotechnical assessment, undertaken prior to construction will determine the best approach based on the existing in-situ soil conditions for each site.

The proponent will seek to minimize road construction impacts by minimizing the required area of road construction and by adhering to REA setbacks. It should be noted that during the design of the project, significant effort was undertaken to avoid constructing new roads. Where possible existing driveways and roads will be used or improved, thus reducing the amount of land required to access the project's facilities. Roads were also

CONSTRUCTION PLAN REPORT

located to avoid interactions with natural features and setbacks, where possible.

Any public road upgrades required for the delivery of construction equipment and turbine components will be subject to the terms and agreements made between the Proponent and the Township. Any damages to public roads as a result of construction activities will be repaired.

All access roads will conform to and be compliant with provincial and municipal regulations and will be built to support the weight of the equipment and heavy machinery required to build each wind turbine location. Municipal and provincial permits and approvals will be obtained, as required, prior to construction.

All access roads will be constructed before any wind turbine components will be delivered to or installed on the site. The construction of access roads will observe the following design constraints:

- All roads will be five (5) meters wide with an additional 1 one (1) meter compacted shoulder on each side for a total width of seven (7) meters.
- Roads will be compacted for either a) fifteen (15) metric ton per axle load in wet or dry conditions. This value is based upon a single axle equipped with dual wheels or super-single tires, tire pressure of eight hundred (800) kPa and a maximum rut depth of thirteen (13) millimeters; or, b) a minimum load bearing capacity of two hundred and fifteen (215) nominal kPa.
- Roads will have a vertical grade of no greater than eight percent (8%).
- Roads must have a maximum lateral cross-fall grade of two percent (2%) and a minimum lateral cross-fall grade of zero point five percent (0.5%) to allow for positive drainage away from the road surface.
- All vertical curves must have longitudinal radii (convex or concave) must not be less than two hundred (200) meters and irregularities in access roads shall have a maximum relative rise or fall of no more than one hundred and fifty (15) millimeters within and thirty meter (30m) section.
- The intersection of access roads and public roads should be modified to accommodate long loads by constructing temporary access with a minimum forty five (45) meter outside turning radius and a maximum inside turning radius of forty (40) meters with suitable culverts.
- Culverts will conform to municipal and NPCA requirements and approvals. Temporary access will be removed and restored following construction.
- Road paths will be clear of vegetation and free from overhead obstructions.
- Roads, crane pads, and laydown drainage systems must be designed to control and dissipate the flow of surface water along the roads so as to self drain.
- Roads must be maintained in good condition for site traffic (graded, watered, flat, rut free, etc...) through out the life of the project.
- Roads must be marked with snow poles where and when applicable.

- Embankments will be constructed to maintain stability through out the project life span.

2.1.2. Turbine Site and Crane Pad Construction

Each wind turbine's access road will terminate at a crane pad where the turbine will be constructed. A crane will be required to erect the turbine during construction. A crane pad will be used to support the crane and will be temporary. The crane pad will be made of the same construction material as the access roads and subject to the conditions of the geotechnical assessment. Following construction, the crane pad will be restored using standard industry practices and subject to provincial and municipal requirements as applicable. Restoration is anticipated to be completed in **September, 2013**.

Each turbine location will need to be cleared and levelled before construction. The lay down of turbine components will take place within the proposed access road and may extend into a 50 meter by 50 meter area located around each turbine location. This area will be cleared, levelled, and be made accessible during the Construction Phase. Normally, topsoil is removed and stored for restoration and reclamation efforts.

Crane pads will be constructed in conjunction with access roads at each turbine location. Each crane pad is approximately 20 meters by 40 meters in area. The topsoil at the crane pad will be removed and 600 millimetres of crushed gravel will be compacted.

If any deeply buried archaeological remains are found, then the Ministry of Tourism and Culture will be contacted. If archaeological remains are found, then turbine locations may be relocated, in coordination with appropriate agencies and stakeholders.

Excavated materials, such as topsoil will be reused as appropriate during post-construction restoration. Construction equipment for turbines and associated infrastructure generally includes graders, bulldozers, trucks, and cranes.

The turbine site plan is shown in **Tab 2 and 3**.

Construction of the turbine site and crane pads will observe the following design constraints:

- Crane pad working surface dimensions will be constructed at each location will be a minimum of twenty (20) meters by forty (40) meters.
- Crane pads will have a minimum inside turning radius on curves of eight (8) meters and a minimum outside turning radius of twenty (20) meters when using a crane with an aspect ratio of 1:1. Cranes with larger aspect ratios must be modified to accommodate the crane turning radius.
- Crane pads will be compacted for a ground bearing capacity for a one point five (1.5) meter wide strip load of two hundred and forty (240) kPa in wet or dry conditions.
- Crane pads on grades of greater than six percent (6%) must have a ground bearing capacity of two hundred and seventy (270) kPa in wet or dry conditions.
- Crane pad shoulders will be compacted to the same grade as the centre of the pad

CONSTRUCTION PLAN REPORT

- Crane pads will have a maximum side slope grade of two percent (2%)
- The grade of direction will not exceed eight percent (8%)
- Shoulder slopes must be no greater than forty-five (45°) degrees.
- Crane pads and shoulders will be graded so as to self drain, and must not allow water to accumulate
- Crane pads must be free of obstruction and shall provide a clear corridor of no less than ten (10) meters wide.
- Crane pad must be maintained through out construction to ensure snow removal, dust prevention, and re-compaction after environmental conditions or mechanical damage.
- The crane pad, turbine site, and laydown/storage areas will conform to Vestas Site Preparation Specifications and Installation Manual.

2.2. Delivery of Equipment

The wind turbines components (tower, blades, and nacelle) will be transported to the site by cargo truck, and will be stored and assembled on site. Turbine components will be delivered on authorized oversized vehicles. Heavy construction equipment used to assemble the tower and turbine will also be delivered by truck and assembled on site.

Vestas, as the selected turbine manufacturer for the Wainfleet Wind Energy Project will be responsible for transporting the turbine components to the project site and acquiring the necessary transportation and safety permits, from the appropriate authorities (i.e. Ministry of Transportation) for the delivery of turbine components. Turbine components will be delivered to the project site by individual oversized vehicles. It is anticipated that Ten (10) heavy hauling trucks will be required for the delivery of each turbine and will consist of the following:

- Three (3) for the blades;
- One (1) for the nacelle;
- One (1) for the hub;
- One (1) for the controllers and converters; and
- Four (4) for the tower.

A preliminary Transportation Survey has been prepared for the project by Transera International Logistics to evaluate potential transportation routes for the delivery of turbine components to the project location and has been provided in Appendix B. The preliminary transportation survey provides the weight information for each turbine component. It is expected that one complete turbine will be delivered per day.

2.3. Foundation Construction

Topsoil will be removed and stockpiled before excavation for construction of the turbine foundations. A backhoe will be used to excavate an area of approximately 3 meters deep by

CONSTRUCTION PLAN REPORT

20 meters wide by 20 meters long for the foundation. Topsoil and subsoil will not be mixed and will be stored separately. Where possible, excess fill will be used for on-site grading purposes. Excavation work is expected to be above the water table at all times of the year.

The foundation will be constructed of poured concrete and reinforcing rebar steel. Wooden forms will be used to contain wet concrete and will be removed once the concrete is cured. A mounting ring for the turbine tower will be attached to the foundation. The mounting ring is used to support and connect the turbine tower to the foundation. Foundation construction will take approximately one month for all five turbine locations.

Each foundation will be left to cure for approximately one month before tower erection. Quick curing foundation methods may be employed at some sites where appropriate to geotechnical conditions. Quick curing foundations will conform to provincial building standards.

The final foundation design, including the foundation type and dimensions, will depend on the results of a site specific geotechnical assessment of the turbine locations. For the Wainfleet Wind Energy Project the turbine foundations are anticipated to be piled footing type.

- At each wind turbine location, a Lay-Down area must be provided adjacent to the access road of sufficient area to permit any turbine equipment being delivered to the Crane Pad to be offloaded and stored pending erection and installation of the same. Vegetation from this area must be cut short and a graded working area must be provided with a forty-five (45) meter radius from the center of the turbine foundation with burms removed.
- Any portion of the Lay-Down area, or other travel path between the access roads and the Lay-Down area, over which delivery trucks are expected to travel in order to deliver the relevant Turbine Equipment must satisfy the requirements set for site access roads.
- The maximum construction site required by the constructor at each foundation is seventy (70) meters by seventy-six (76) meters (the "Construction Site"); the Construction Site includes a Crane Pad area of twenty (20) meters by Forty (40) meters, which may have a maximum slope of two percent (2%) in any direction.
- The Crane Pad, the construction site and the access road parallel to the construction site should be all be at the same grade
- The remainder of the Construction Site must be clear of vegetation, rocks and other obstructions that may impede access by erection equipment.
- Any areas utilized for main component storage should be designed to provide a nominal ground bearing capacity of two hundred and fifteen (215) kPa.
- Shoulder slopes, if required, for Crane Pad must be no greater than forty-five degrees (45°). The Pad area must be graded to drain all water away from Crane Pad.
- The Proponent is responsible for ensuring that the construction site at each tower foundation is frequently and routinely maintained as necessary to ensure that the

surface remains in good condition suitable for truck and tracked crane traffic; such maintenance includes snow removal and dust prevention.

2.4. *Turbine Assembly and Installation*

The turbines will be erected using a large crane supported on the crane pad area adjacent to each turbine site. The wind turbine (including the tower, blades, and nacelle) will be assembled using the crane. This activity will take approximately one month for five turbines. Following construction, the crane pad will be restored for agricultural use.

- Provision will be made for the safe and proper lay-down and storage of wind turbine components at, or adjacent to the crane pad, within the operating radius of the main crane and operating radius of the assist crane.
- If the main crane has a Lattice Boom, then a boom construction area will be required. This must be along side the crane path, with a width of fifteen (15) meters and a length of one hundred forty (140) meters.
- When lattice jib is used, the rigging area for the main crane must have a minimum length equal to wind turbine hub height plus twenty percent (20%) of the hub height added to this length parallel to the site road. The usable width must be a minimum of seven (7) meters.
- Off-loading area for nacelle must be a minimum five (5) meters by fifty (50) meters and within the working radius of the main crane.
- Off-loading area for blades must be twelve (12) meters by fifty-eight (58) meters and within the working radius of the main crane.
- Provisions must be made for the safe and proper lay-down and storage of parts in a suitable secure location. Parts include and are not limited to: lifting tools, service platforms (lifts), uninterruptable power supply, tower cables, nose cone parts, stairs, steps, ladders, boxes of bolts, and thirteen point eight (13.8) meter parts containers.
- Compounds, storage and lay-down areas must be clear of all debris, and the area must be level and free draining, and to have the same bearing capacity and proof testing as the crane pad.

2.5. *Interconnection from Switching Station*

The generated power from the Project will be collected via underground cabling and directed to a switching station. The switching station will connect directly to the Hydro One distribution system. The turbine will generate power at 690 volts, which will then be stepped up to the 27.6 kilovolt level of the local collector system. The local collector system gathers the power generated by turbines via underground cables and delivers it to a switching station which represents the operating demarcation point between the hydro utility and the generator. This station is also used for housing metering, line communication, and operating controls.

2.6. Electrical Switching Station

The switching station site will be excavated to allow for the installation of gravel substrate and the construction of a concrete foundation. The switching station foundation will be approximately 7 meters by 8 meters. Substation equipment will be grounded to a grounding grid installed in the gravel substrate. Substation equipment will be mounted on the concrete foundation and connected to the adjacent outgoing distribution line. The substations will be fenced, locked, and secured to prevent unauthorized access. The site plan provided in **Tab 2** provides the location of the electrical substation.

2.7. Electrical Tapline and Distribution System

The power generated at each of the wind turbine generators is transported through an underground collector system. The underground collector system will consist of direct buried or directionally drilled underground cabling in trefoil format routed in trenches along access roads when on private property and within existing municipal and public road right of ways. Depths and location of the underground collector system will adhere to municipal requirements and existing utility setbacks. If required, there may be some shared use with existing Hydro One lines and poles. The collector system will be built to applicable standards and codes.

Any excavated soil associated with the installation of the underground collector system will be temporarily stored and then reused as backfill

Electricity collected at the switching station will be connected to Hydro One's distribution grid. The existing Hydro One distribution line may have to be extended to connect the switching station location to the existing distribution grid. An appropriate protection system, as per the best industry practices as well as utility guidelines will be provided.

2.8. Site Clean-up and Restoration

After the turbines have been constructed and the crane pad is no longer required, all construction areas will be rehabilitated. Any disturbed portions of the site will be remediated and re-vegetated. Any waste or debris generated during construction will be collected and disposed of at an approved waste facility. Topsoil removed during construction will be replaced/re-applied. Erosion prone areas will receive new plantings or seeding. Natural regeneration will be encouraged to achieve regeneration. This activity will take approximately one month with new vegetation growth taking longer. Sediment and erosion control plans will be implemented during construction activities. Once inspections have determined that the threat of erosion has diminished sediment and erosion control equipment will be removed.

2.9. Temporary Storage Facilities

Temporary storage of topsoil may be required during construction. Excavated topsoil that is required for site clean-up and restoration will be stored on lands immediately adjacent to the turbine location. While excess topsoil may be stored off site until decommissioning. Topsoil and subsoil will not be mixed, nor will topsoil be contaminated with any other material.

2.10. Turbine Commissioning

Turbine commissioning takes place before the turbine begins producing electricity for the grid. This includes interconnection testing between the turbine and point of interconnection. Before the turbine can begin providing electricity to the grid, a battery of tests must be undertaken to confirm that the system conforms to regulatory and technical requirements. Interconnection to the electrical grid will be undertaken as a final step. Any required physical or technical adjustments may be carried out on the turbine at this point. The purpose of these tests is to confirm that the turbine is operating within technical specifications, codes and contractual expectations. This activity will be scheduled, but will ultimately depend on weather conditions. Turbine commissioning will take approximately two weeks for five turbines.

2.11. Traffic Management

A Traffic Management Plan will be prepared and implemented by the proponent in accordance with all applicable Provincial and Municipal laws and standards. This plan will be developed using the Ontario Traffic Manual Book 7 Temporary Conditions. The plan will ensure that access for emergency vehicles will be maintained at all times. Use of municipal roads will be subject to municipal design and operating restrictions.

3.0 Construction Equipment

Construction of each turbine will require heavy equipment. Some equipment typical of construction includes *backhoes, trucks, cranes, air compressors, concrete pump, concrete vibrator, concrete breaker, bull dozers, generators, loaders, etc...* Heavy equipment will produce noise and **Table 1-F** describes potential noise emissions for each type of equipment. It should be noted that not all of the equipment listed in Table 1-F will be used at each turbine. Construction equipment will vary depending on the tasks required for each activity (road construction, taplines, or the turbine itself).

The Noise Assessment Report provides greater detail on noise emissions for this project. All construction noise will be temporary in nature. Late night construction is not anticipated for this project and, if require, a Noise By-law exemption will be requested from the Township. The constructor will minimize noise disturbance impacts by restricting the use of noise emitting equipment to normal daytime hours.

Table 1-E: Typical Equipment and Noise Generated During Construction	
Equipment	Noise (dBA)
Air Compressor	81
Backhoe	85
Concrete Pump	82
Concrete Vibrator	76
Concrete Breaker	82
Dozer	80
Generator	78
Load	79
Paver	88
Water Pump	76
Trucks	88
Pile Drivers	101

Source: Bolt, Beranek and Newman, 1971

3.1 Required Turbine Components and Construction Materials

Turbine components include tower, nacelle, blades, generator, hub, transformers, electrical cabling, and interconnection equipment. Construction materials include wood, steel, poles, concrete, gravel aggregate, geotextiles, and culverts. Where possible, materials will be obtained locally from within Niagara Region. Materials will be selected by the constructor and will be suitable for the site specific conditions. Construction equipment and machinery will be powered with diesel or gasoline. Portable generators and pumps may be required.

All Materials will be stored at each individual turbine site and, if required, at the staging areas. Trucks will bring all materials to the project site. Oversized trucks will be required to transport turbine structures and blades. The number of trips made by delivery vehicles will depend on the final selection of transport vendors, their location and the capacity and availability of their vehicles. Transport of materials will occur between **April 2013** and **September 2013**. The frequency of delivery will be dependent upon the construction

CONSTRUCTION PLAN REPORT

staging listed in **Table 1-D** and determined by the constructor.

Some chemicals may be required on-site for construction. These include concrete mixtures required for foundations and fuel for heavy equipment. Fuel will be handled in accordance with the mitigation measures provided for in **S.5.0** of this report and commitments made in the Environmental Impact Study.

The Environmental Effects Monitoring Plan (EEMP) contained within the Design and Operations Report provide clarification on handling and storage requirements for chemicals. This report also specifies response measures to be followed in the event of a hazardous materials spill.

4.0 Additional Procedures

4.1 *Disposal of Construction Materials*

The project will not produce toxic or hazardous materials during construction. Some petroleum, oils, and lubricants (POL) and other fluids, that may be considered toxic, may be brought on site for turbine maintenance. Excess POL waste removed from the project site will be disposed or recycled according to provincial and municipal environmental waste management standards. Non-hazardous waste material will be handled by the municipal waste management system.

Excess construction materials will be reused where possible and recycled as an alternative to reuse. Some materials may be sent to the municipal landfill where necessary. The constructor will conform to municipal and provincial disposal requirements for landfill waste and transport of excess construction materials.

4.2 *Waste Management*

The project will not produce toxic or hazardous materials during construction. Some petroleum, oils, and lubricants (POL) and other fluids, that may be considered toxic, may be brought on site for turbine construction. Excess POL waste removed from the project site will be disposed or recycled according to provincial and municipal environmental waste management standards. Non-hazardous waste material will be handled by the municipal waste management system.

Excess materials required during construction will be reused where possible and recycled as an alternative to reuse. Some materials may be sent to the municipal landfill where necessary. The constructor will conform to municipal and provincial disposal requirements for landfill waste and transport of excess construction materials.

4.2.1 Solid Waste

Any solid waste generated as a result of construction of the Wainfleet Wind Energy Project will be produced from the assembly of the turbine and tower structures, foundations, subsurface cables, and vegetation cleared as required for equipment access to the site. The preferred method of disposing of solid waste for the constructed facility is reuse and recycling. In the even that materials cannot be reused or recycled, waste materials will be transported to the nearest waste disposal site as required.

Cranes will be necessary to assemble the turbines and towers. All associated components will be brought onsite using a flatbed truck. Any concrete sections and associated structural steel remaining from the turbine foundation will be transported off-site. All holes created from the construction of the turbine foundations will be filled, and top-soil will be re-applied.

Waste materials generated from the assembly of the turbine foundation will be reused, recycled or transported to the nearest waste disposal facility will be made in consultation with a waste management company at the time construction activities occur.

Clearing of the surrounding environment during the construction phase will be kept to a minimum. The clearing of land to undertake construction activities will not utilize any slash and burn methods.

Upon the completion of construction activities, the turbine assembly areas, access roads, and other areas cleared as required for construction activities will be reseeded or replanted with species similar to those found in the surrounding area. These areas will undergo natural regeneration to their original state. Where erosion prone areas exist, replanting in the surrounding area may be required to minimize the impacts of erosion.

4.2.2 Liquid Waste

Liquid waste generated as a result of construction activities of the Wainfleet Wind Energy Project may include fuel, oil and lubricants found inside the wind turbines, as well as the machinery equipment brought onsite during the construction process.

The storage and use of any fuels, oils and lubricants during the operation of the project's facility will comply with all applicable provincial and federal regulations, codes, and guidelines. The disposal and cleanup of any liquid waste will be in accordance to the procedures outlined in the Design and Operations Report for the Wainfleet Wind Energy Project.

4.3 Abandonment Procedures

In the event that construction of the facility and associated work is not completed, exposed soils may be subject to erosion due to wind or storm water run-off, which may respectively result in the creation of dust and sedimentation impacts. Wainfleet Wind Energy Inc. is responsible to undertake environmental effects monitoring as part of the EEMP following construction and through the life of the project. Where erosion prone areas have become evident revegetation and replanting may be required. Sediment and erosion control plans will be implemented during construction and decommissioning activities. Once inspections have determined that the threat of erosion has diminished sediment and erosion control equipment will be removed.

4.4 Consultation and Construction

Wainfleet Wind Energy Inc. will consult with adjacent land users, local municipality, federal agencies, provincial agencies, police and emergency services, and otherwise make suitable notice of the construction of the facility to those impacted by such activities.

4.5 Emergency Response and Communications Plan

In the event an emergency occurs during construction phase of the Wainfleet Wind Energy Project all appropriate authorities will be notified. Any Emergency Response and Communication required during the construction phase of the project will follow the guidelines and procedures documented in the *Design and Operations Report*.

5.0 Environmental Impacts and Mitigation of Construction

An Environmental Impact Study (EIS) has been prepared for this project and is included as part of the REA Package. Please review the EIS in conjunction to this report. This report has been prepared in combination with the Natural Heritage Assessment to evaluate the significance of natural heritage features at the project site and to document how mitigation measures will ensure that there will be no negative environmental effects. The evaluation is based on information obtained during the records review, agency consultation and field studies conducted on-site. This document outlines the potential negative impacts on natural heritage features as a result of constructing and operating wind turbines and the supporting project infrastructure and proposes mitigation measures to address these impacts. Monitoring plans will also be established to evaluate the success of the mitigation measures proposed (Also, see the **Environmental Effects Monitoring Report**).

The project complies with Ontario Regulation 359/09 – Renewable Energy Approvals (REA) under Part V.0.1. of the Environmental Protection Act. The EIS document satisfies the reporting required under the Natural Heritage Section. As the lands are not within the Oak Ridges Moraine, Protected Countryside, or the Niagara Escarpment, those sections of Ontario Regulation 359/09 do not apply. Field reviews and background information checks identified all natural heritage features, and confirmed whether these features were Significant. Where the project was within the required setbacks given under Ontario Regulation 359/09, mitigations measures are proposed to address and negative environmental effects to natural heritage features.

The EIS identifies any environmental effects monitoring requirements to be included in the environmental effects monitoring plan report and describes how the construction plan report will address any negative environmental effects. These mitigations and requirements ensure that there will be no negative effects as a result of the proposed project.

6.0 Environmental Monitoring

Environmental monitoring involves providing good leadership and management structures to maintain a situational understanding of the environmental effects that occur during construction. This section describes how environmental monitoring, as described in the Environmental Effects Monitoring Plan (EEMP) relates to the Construction Phase of the project.

6.1 Leadership and Management Structures

The Proponent is responsible for providing leadership and management for the implementation of the Environmental Effects Monitoring Plan (EEMP). The Proponent and their agents or representatives are responsible to ensure that they diligently adhere to the procedures and practices outlined in the EEMP as well as legal and regulatory conditions of approvals. Once construction is completed, the proponent will confirm that environmental restoration efforts were correctly completed.

The Proponent will appoint a Project Manager to oversee the environmental monitoring for this project. During all phases and stages of the project, the Proponent must retain qualified professionals to confirm that environmental monitoring is correctly conducted. The qualified environmental monitoring professional(s) must regularly report and document the execution of the EEMP.

Wainfleet Wind Energy Inc. is committed to working with all stakeholders to reduce or eliminate the impacts of this proposed project. Wainfleet Wind Energy Inc. affirms its commitment to implement the EEMP and ensure the effectiveness of the Environmental Impact Study. Wainfleet Wind Energy will ensure that the environmental concerns and mitigation measures described in the Renewable Energy Approval Application are addressed and implemented in the field.

6.2 Environmental Effects Monitoring Plan (EEMP)

The Environmental Effects Monitoring Plan is found as part of the **Design and Operations Report**. The Wainfleet Wind Energy Project's *Environmental Effects Monitoring Plan* (EEMP) has been developed by Morrison Hershfield (MH) to describe the environmental protection measures required for all activities associated with the Wainfleet Wind Energy Project. The *Environmental Effects Monitoring Plan* outlines the necessary monitoring protocols required to make certain that mitigations measures are effective and adequate. This plan should be considered a supporting document to the rest of the *REA Package* and fulfills the requirements outlined by *Ontario Regulation 359/09 - Renewable Energy Approvals* under the *Green Energy Act*.

This *EEMP* is applicable to all employees of Wainfleet Wind Energy Inc. working on the operation and maintenance phases of the Wainfleet Wind Energy Project and provides guidance to Wainfleet Wind Energy Inc.'s contractors and subcontractors on environmentally safe standards for project activities during operation and environmental monitoring of the project.

6.3 Project Commissioning and Scheduling

Wainfleet Wind Energy Inc. is expecting project operations to commence by October, 2011. During the construction, operation and decommissioning phases of the Wainfleet Wind Energy Project environmental monitoring procedures will be carried out.

6.4 Purpose and Objectives of the EEMP

This *Environmental Effects Monitoring Plan* has been prepared to provide the required protection measures for all project activities associated with Wainfleet Wind Energy Project.

The purpose of the *Environmental Effects Monitoring Plan* is:

- To ensure that Wainfleet Wind Energy Inc.'s commitments to minimizing environmental effects are met.
- To provide a description of the environmental concerns related to the operation, maintenance, and decommissioning of the Wainfleet Wind Energy Project and instructions for mitigation of the potential impacts of these activities.
- To provide concise and clear instructions for implementing mitigation measures for the protection of environmental resources, and minimizing potential adverse environmental effects. To provide a means of tracking and recording actual effects of the project on valued ecosystem components.
- To ensure that the Wainfleet Wind Energy Project operations meet all provincial, federal and municipal requirements.
- To provide a reference document for planning and/or conducting operation, maintenance or decommissioning activities that may have an impact on the environment.

The Environmental Effects Monitoring Plan is intended to be a supporting document of the REA application that provides guidelines for the protection of valued ecosystem components during operation, maintenance and decommissioning activities. Background information contained within the Environmental Effects Monitoring Plan is covered in more detail in the other technical reports of the REA Package

7.0 Summary

The proposed Wainfleet Wind Energy Project can be constructed with minimal impacts to the environment provided that the constructor adheres to the environmental mitigation measures provided here and within the Environmental Impact Study. Furthermore, environmental monitoring will reduce the risk of potential environmental impacts by outlining procedures based on regulations and good construction practices for waste management, health and safety, emergency response and training.

The Environmental Impact Study (EIS) of the REA application package describes the potential impacts of the project on significant natural features and where the project interacts with REA setbacks. The EIS provides mitigation and impact reduction measures where applicable. Impacts resulting from construction of underground crossings of watercourses by electrical lines are discussed in the Water Bodies Impact Assessment Report, where appropriate mitigation measures to reduce these impacts are also described. Environmental monitoring plans have been developed and are discussed in the Environmental Effects Monitoring Plan included within the Design and Operations Report included in the REA package.

8.0 Consultant Legal Statement

Morrison Hershfield Limited (“MH”) produced this report in accordance with our Proposal and information provided by IPC Energy (“the Client”) and is based upon statements by the Client on the proposed design, construction, operations, maintenance, and decommissioning of the proposed wind energy project. The information and statements contained herein are for the sole benefit of the Client for the purposes of the Renewable Energy Approval.

The contents of this report are based upon our understanding of guidelines, regulations, and statutes which we believe to be current at this time. Changes in guidelines, regulations, statutes, and enforcement policies can occur at any time, and such changes could affect the conclusions and recommendations of this report.

While we have referred to and made use of reports and specifications prepared by others, we assume no liability for the accuracy of the information contained within those reports and specifications.

Appendix A: Geotechnical Investigation

Appendix B: Preliminary Transportation Survey

SOIL-MAT ENGINEERS & CONSULTANTS LTD.

130 LANCING DRIVE, HAMILTON, ONTARIO L8W 3A1
PHONE (905) 318-7440 FAX (905) 318-7455
E-MAIL: info@soil-mat.on.ca WEB SITE: www.soil-mat.on.ca



PROJECT No.: SM 103793-G

July 29, 2010

IPC ENERGY
2550 Argentia Road, Suite 105
Mississauga, Ontario
L5N 5R1

Attention: Mr. Sunny Galia, Project Manager

**GEOTECHNICAL INVESTIGATION
PROPOSED WAINFLEET WIND POWER PROJECT
WAINFLEET, ONTARIO**

Dear Sir ,

Further to your authorisation we have completed the fieldwork and laboratory testing, and report preparation, in accordance with our Geotechnical Investigation Program proposal dated May 14, 2010. Our comments and recommendations, based on our findings at the eight borehole locations, are presented herein.

1. INTRODUCTION

We understand that the project will consist of the construction of 5 wind turbines situated in the southern portion of Wainfleet. Specifically three of the towers are proposed in an area between Concession Road 1 and Abbey Road, to the east and west of the unopened road allowance for Sideroad 22. The other two towers are proposed to be located within an open field on the east side of Station Road, south of Concession Road 1. The wind turbine units will have tower heights on the order of 100 to 110 metres, and rotor diameter of approximately 100 metres. The project will also involve the construction of access roadways and temporary construction work areas at the tower locations. The purpose of this investigation program was to conduct an assessment of the subsurface conditions at each of the proposed turbine locations, evaluate these conditions with respect to the proposed wind turbines, and provide our comments and recommendations for design of foundations and related earth works for the project, from a geotechnical point of view.

This report is based on the above summarised project description, and on the assumption that the design and construction will be performed in accordance with applicable codes and standards. Any significant deviations from the proposed project design may void the recommendations given in this report. If significant changes, such as additional turbines or revised locations, are made to the proposed design, then this office must be consulted to review the new design with respect to the results of this investigation. The information contained in this report does not reflect upon the environmental aspects of the site and therefore they have not been addressed in this document.

PROJECT No.: SM 103792-GGEOTECHNICAL INVESTIGATION
PROPOSED WAINFLEET WIND POWER PROJECT
WAINFLEET, ONTARIO**2. PROCEDURE**

A total of eight [8] sampled boreholes were advanced at the locations illustrated on the enclosed Drawing No. 1, Borehole Location Plan. During the fieldwork the location of Turbine Nos. 4 and 5 were initially incorrectly located due to a malfunction with the GPS unit, however the data from these two boreholes has been included, identified as Borehole Nos. 6 and 7. Also there was a discrepancy with respect to the staked location for Turbine 4 versus the provided UTM co-ordinates, and as such two locations were investigated identified as Borehole Nos. 4 and 4a. Borehole Nos. 1, 2 and 3 were advanced at the staked locations corresponding to the UTM co-ordinates provided.

The boreholes were advanced using either solid or hollow stem continuous flight auger equipment, in conjunction with wash boring for Borehole No. 2, on June 24, July 14, 15, 16, 19 and 20, 2010 under the supervision of SOIL-MAT ENGINEERS. The borings were terminated at refusal, at depths ranging from 7.8 to 45.1 metres below the existing ground surface level. In Borehole Nos. 2 and 6 the bedrock was cored using Nq diamond core barrel equipment to depths of 48.36 and 21.30 metres below the surrounding ground surface, respectively.

Representative samples of the subsoils were recovered from the borings at selected depth intervals using split barrel sampling equipment driven in accordance with the requirements of the ASTM test specification D1586, Standard Penetration Resistance Testing. After undergoing a general field examination, the soil samples were preserved and transported to the Soil-Mat laboratory for visual, tactile, and olfactory classifications. Routine moisture content tests were performed on all soil samples recovered from the borings.

The five proposed turbine locations were marked with stakes by representatives of IPC Energy in advance of the second round of fieldwork, and the UTM co-ordinates provided. The boreholes were located at the stake locations, with the UTM co-ordinates checked using a hand held GPS unit. The boreholes were referenced to the existing ground elevation at their locations.

The results of the subsurface investigation are detailed in Borehole Logs Nos. 1 to 7, inclusive, which can be found following the text of this report. It is noted that the boundaries of soil types indicated on the borehole logs are inferred from non-continuous soil sampling and observations made during drilling. These boundaries are intended to reflect transition zones for the purpose of geotechnical design and therefore should not be construed as the exact planes of geological change.

PROJECT No.: SM 103792-GGEOTECHNICAL INVESTIGATION
PROPOSED WAINFLEET WIND POWER PROJECT
WAINFLEET, ONTARIO**3. SITE DESCRIPTION AND SUBSURFACE CONDITIONS**

The project area consists of a number of properties in the southern portion of Wainfleet. The area of Turbine Nos. 1 to 3 is bounded to the north and south by Abby Road and Concession Road 1, to the east and west of unopened Sideroad 22. The area of Turbine Nos. 4 and 5 is an open field to the east of Station Road, south of Concession Road 1. Each of the proposed tower locations are within open agricultural fields.

The locations are summarised as follows:

Turbine 1 [631359E 4751252N] – West of Sideroad 22, south of Abbey Road

Turbine 2 [631758E 4750750N] – East of Sideroad 22, south of Abbey Road

Turbine 3 [631921E 4750541N] – East of Sideroad 22, north of Concession Road 1

Turbine 4 [632794E 4748392N and 632744E] – East of Station Road

Turbine 5 [632706E 4748817N] – East of Station Road

The subsurface conditions identified at the borehole locations are summarised in the following paragraphs:

Topsoil

A surficial veneer of topsoil approximately 200 millimetres thick is present at the borehole locations. It should be noted that the depth of topsoil might vary over the project area and from the depths encountered at the borehole locations.

Clay/Silty Clay

Native Clay/Silty Clay was encountered beneath the topsoil veneer in all boreholes. The Clay/Silty Clay is brownish grey, to grey and reddish grey, with traces of to some fine Sand and Gravel. The upper perhaps 2 to 3 metres of the native Silty Clay is stiff in consistency, and becomes soft to very soft below about 2.5 metres. The Silty Clay/Clayey Silt was proven to refusal in each of the boreholes.

Sandy Silt

In Borehole Nos. 4, 5, 6 and 7 interbedded deposits of Sandy Silt were encountered. The Sandy Silt is generally brown, with a trace of Clay, and is generally in a loose condition.

Limestone/Dolostone Bedrock

Each of the boreholes was advanced to auger refusal on assumed bedrock at depths of 40.10, 45.10, 42.32, 16.35, 16.71, 9.45, 13.41 and 7.8 metres in Borehole Nos. 1 to 4, 4a, 5 to 7, respectively. In Borehole No. 2 the bedrock was cored from 45.10 to 48.36 metres, and in Borehole No. 6 the bedrock was cored from 13.41 to 21.30 metres.



From published information and the recovered rock cores the bedrock consists of Limestone formations. The bedrock is grey to tan, with white gypsum and chert inclusions, relatively fractured in the upper levels. Discontinuities in the bedrock are generally closely spaced at 0.1 to 0.5 metres, with a small aperture. Gypsum and chert deposits and inclusions are consistent with the Limestone of the southern Niagara Peninsula. Rock core recoveries were measured on the order of approximately 95 to 100 percent, with Rock Quality Designation [RQD] values of 70 to 96 percent. Unconfined compressive strength testing performed on two selected specimens yielded strengths of 42.2 and 142.0 MPa. The lower result was effected by the presence of gypsum, while the greater result was influenced by the presence of chert inclusions. Overall the bedrock is considered to be of good quality, in a relatively sound condition, with good strength characteristics.

Groundwater Observations

On completion of drilling, and prior to any rock coring, each of the boreholes was noted to be dry. However, insufficient time would have passed for groundwater to stabilise in the low permeability Silty Clay soils. Based on observed soil conditions and past experience the static groundwater level is estimated to be at a depth of approximately 4 to 5 metres.

4. FOUNDATION CONSIDERATIONS

The conditions encountered at the borehole locations demonstrate a consistent overburden condition of a relatively thin layer of weathered stiff Silty Clay extending to perhaps 2.5 metres, transitioning to soft Clay/Silty Clay. The soft to very soft Clay soils extend to the bedrock, and have natural moisture contents in the range of 25 to 50 percent, clay contents in the range of 21 to 79 percent, plastic limit from 16.6 to 20.8 percent and liquid limit from 28.0 to 44.2 percent, and are characteristic of normally or under-consolidated clays of medium plasticity. These soils do not afford favourable conditions for the support of shallow foundations for the proposed wind turbines.

The depth to bedrock varies from the north to south of the project area, at roughly 40.1 to 45.1 metres over the three northern turbine locations and 9.45 to 16.71 metres at the two southern locations. It is noted that the depth of the bedrock varies significantly over the southern portion, as evidenced by Borehole Nos. 6 and 7 encountering bedrock at depths of 7.8 to 13.41 metres. The bedrock is generally of good quality and will afford excellent support conditions for deep foundation schemes.

PROJECT NO.: SM 103792-GGEOTECHNICAL INVESTIGATION
PROPOSED WAINFLEET WIND POWER PROJECT
WAINFLEET, ONTARIO**Shallow Foundations**

As noted above spread foundation are not considered to be a favourable option for the site soil conditions and the proposed structures. The low strength characteristics and high settlement potential, specifically long-term consolidation settlement, of these soils likely make design of shallow foundations impractical. The low available bearing values would result in very large mat foundations, with a corresponding high depth of stress influence and thus high potential settlements.

It may be possible to undertake ground improvement methods to provide increased bearing capacities for shallow foundations while minimising the settlement potential. Rammed Aggregate Piers [RAP] would be one such method. It is recommended that Mr. Mark Tichgelaar of GeoSolv Design Build be contacted at 905-702-0059 or www.geosolv.ca for comments in this regard.

Short Pier (Caisson) Foundations

Where bedrock is at a relatively shallow depth, such as the location of Turbine 5 with bedrock at 9.45 metres, an end bearing caisson foundation scheme may be considered. The piers must extend to the bedrock and may be designed on the basis of the bearing values noted below.

Limestone Bedrock:

$$\text{SLS} = \text{ULS} [\text{factored}] = 1,500 \text{ kPa} [30,000 \text{ psf}]$$

The SLS value represents the Serviceability Limit State, which is governed by the tolerable deflection (settlement) of the structure, using unfactored load combinations. The ULS value represents the Ultimate Limit State and is intended to reflect an upper limit of the available bearing capacity of the founding soils in terms of geotechnical design, using factored load combinations. There is no direct relationship between ULS and SLS, rather they are a function of the soil type and the tolerable deflections for serviceability, respectively. In the case of foundations on bedrock, the bedrock would be required to fail to realise the SLS settlements and thus the SLS and ULS values are the same.

The tops of the piers should be connected with a sufficiently rigid grade beam. The caissons should be a minimum diameter of 0.9 metres and the base cleaned of all loose or disturbed material prior to the placement of concrete. A representative of Soil-Mat should be retained to the site to evaluate/monitor the caisson construction.

Pile Foundations

Where the depth to bedrock is significantly greater, such as the case for Turbines 1 to 4, the use of a driven pile foundation scheme may be a preferred option to take advantage of the high capacity available in the bedrock. The use of driven piles would likely be preferred over bored caissons, since they do not require the removal of large volumes of soil and the corresponding placement of concrete.

Driven steel H-piles may be driven to the underlying bedrock at depths of 9.45 to 45.1 metres to develop ULS capacities on the order of 2000 kN [~250 tons]. For piles bearing on the bedrock, the SLS condition does not apply, i.e., the SLS capacity would equal to the ULS capacity, since the load required on the piles to achieve SLS condition would exceed the ULS value. Settlement of the piles in the loading range specified would be primarily due to elastic compression of the piles. Deflection of the bedrock under the pile loading should be very small. Negative skin friction on the steel "H" piles is considered negligible.

Such piles would typically consist of an HP310x110 section fitted with a driving shoe as per OPSD 3000.100 (Type I). The piles should be battered to resist both the vertical and horizontal forces generated by the wind towers. Batter piles should have suitable rock-points on their tips to ensure that the piles penetrate the rock surface rather than slip along the bedrock surface.

The piles should be driven to 'practical refusal' into the underlying bedrock with a pile hammer that can generate sufficient effective driving energy compatible with the bearing capacity required. It is important that the piles are not over-stressed during pile driving as structural damage to the piles can occur as a result of over-driving. Piles driven to rock reach "practical refusal" quickly, and it is important to stop the driving when rock is reached to avoid 'overdriving' and damaging the piles.

The final set to which the piles are driven would be determined as a function of the bearing capacity required, the rated energy of the pile driver, weight of pile, etc. We recommend that the piles be driven to the design capacity based on the Hiley Formula using the applicable equipment, pile, etc. parameters. In addition, rebound traces should be made on all piles during the final few centimetres of driving. It is expected that the piles will fetch up fairly quickly in the bedrock. Should Hiley Formula calculations fail to provide a definitive bearing capacity, the use of a Pile Driving Analyser and CAPWAP analysis may be required to confirm the specified pile capacity and pile driving set criteria, or alternatively a pile load test.

It is noted that the performance of deep foundation schemes is greatly dependent on the method, equipment, and workmanship utilised during construction. It is therefore essential that installation procedures for the deep foundations be monitored/evaluated by Soil-Mat Engineers.

All foundations/grade beams exposed to the environment must be provided with a minimum of 1.2 metres of earth cover or equivalent insulation to protect against frost damage. This frost protection would also be required if construction were undertaken during the winter months. All foundations should be designed and constructed in accordance with the current Ontario Building Code. All footing beds must be cleaned of any loose, wet or disturbed material immediately prior to the placement of concrete.



It is imperative that a soils engineer be retained from this office to provide geotechnical engineering services during the excavation and foundation construction phases of the project. This is to observe compliance with the design concepts and recommendations of this report and to allow changes to be made in the event that subsurface conditions differ from the conditions identified at the Borehole locations.

5. SEISMIC DESIGN CONSIDERATIONS

The structures shall be designed according to Section 4.1.8 of the Ontario Building Code, Ontario Regulation 350/06. Based on the subsurface soil conditions encountered in this investigation the applicable Site Classification for the seismic design is recommended as Site Class E – Soft Soil.

The seismic data, from Supplementary Standard SB-1 of the Ontario Building Code, for Wainfleet are as follows.

$S_a(0.2)$	$S_a(0.5)$	$S_a(1.0)$	$S_a(2.0)$	PGA
0.40	0.190	0.069	0.020	0.290

6. EXCAVATION CONSIDERATIONS

Excavations for the installation of foundations and underground services through the predominately Silty Clay soils should be relatively straightforward, with the sides remaining stable for the short construction period at 60 degrees to the horizontal or steeper. Nevertheless, all excavations must comply with the current Occupational Health and Safety Act and Regulations for Construction Projects. Excavation slopes steeper than those required in the Safety Act must be supported or a trench box must be provided, and a senior geotechnical engineer from this office should monitor the work.

As noted above, some minor infiltration of groundwater into open excavations should be anticipated, however the volume of water to be controlled is expected to be relatively small. It should be possible to control any water that may seep into the excavations from surface runoff and more permeable seams in the native soils using conventional construction 'dewatering' techniques, such as pumping from sumps and ditches. Surface water should be directed away from the excavations.

The base of the excavations in the Clay/Silty Clay should remain firm and stable. However, as noted above, these soils are sensitive to excessive moisture and disturbance from construction traffic. Care should be taken to minimise or avoid construction traffic on the exposed soils. Excavation base could be protected during

construction with the placement of a thin concrete 'mud slab' or a layer of well compacted crushed granular material such as OPSS Granular B.

7. ACCESS ROADWAYS AND CONSTRUCTION STAGING AREAS

As noted above construction of the wind towers will require access roadways and construction staging areas for the delivery of the materials and erection of the towers. These areas will be subjected to heavy loading from heavy trucks and large mobile crane units.

It is recommended that access roadways and construction staging areas be stripped of all topsoil and unsuitable soft, wet, or disturbed soil to expose competent native soil. In the case of an exposed soil subgrade the area should be nominally compacted with a large smooth drum vibratory compactor. Where possible, the areas should be shaped to promote good drainage of the subgrade to the edges of the access roads, and to prevent water from collecting and ponding under the granular base materials.

A nominal construction access road may consist of 450 millimetres of OPSS Granular B compacted to 98 percent of standard Proctor maximum dry density. This structure is considered adequate for the temporary support of heavy construction equipment. As with all granular roadways some level of regular maintenance will be required, such as re-grading of the surface and occasional placement of additional granular material for re-levelling. For the short duration of tower construction the maintenance requirements should be minimal, depending on the weather conditions, time of year, and volume of construction traffic.

At the location for the set-up of large mobile crane units for the erection of the tower sections it is recommended that a similar subgrade preparation as for the access roadways be undertaken. The depth of granular material should be increased to 600 millimetres and be compacted to 100 percent of Standard Proctor.

The subgrade conditions should be assessed by a representative of this office prior to the placement of granular materials. This evaluation will allow changes to be made, if necessary, based on the actual conditions present at the time of construction.

It is anticipated that after construction a limited access roadway will be left in place to allow for routine maintenance of the wind turbines. The construction access roadway granular base may be left in place to serve for this purpose, with the addition of perhaps 100 to 150 millimetres of OPSS Granular A compacted to 98 percent to provide a smoother driving surface for maintenance vehicles. All other granular materials could be

PROJECT No.: SM 103792-G

GEOTECHNICAL INVESTIGATION
PROPOSED WAINFLEET WIND POWER PROJECT
WAINFLEET, ONTARIO



removed and re-used on subsequent wind tower locations and the abandoned roadways returned to pre-construction conditions.

8. GENERAL COMMENTS

The comments provided in this document are intended only for the guidance of the design team. The subsoil descriptions and borehole information are intended to describe conditions at the borehole locations. Contractors tendering or undertaking this project should carry out due diligence in order to verify the results of this investigation and to determine how the subsurface conditions will effect their operations.

We trust that this geotechnical report is sufficient for your present requirements. Should you require any additional information or clarification as to the contents of this document, then please do not hesitate to contact the undersigned.

Yours very truly,
SOIL-MAT ENGINEERS & CONSULTANTS LTD.

A handwritten signature in blue ink, appearing to read "ISL".

Ian Shaw, P. Eng.
Project Engineer



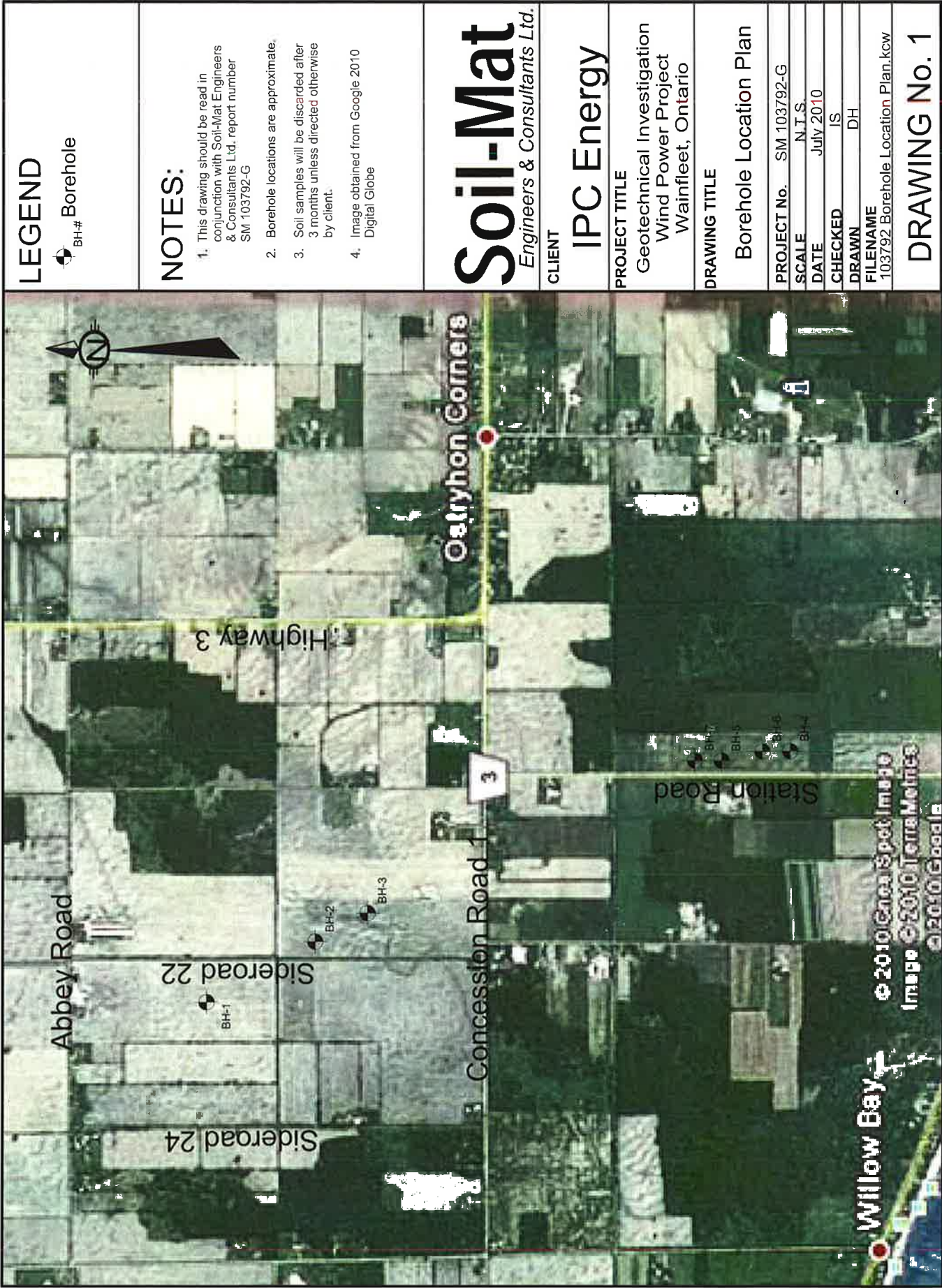
Re issued

A large, stylized handwritten signature in blue ink.

Stephen R. Sears, B. Eng. Mgmt., P. Eng.
Review Engineer

Enclosures: Drawing No. 1: Borehole Location Plan
 Log of Borehole Nos. 1 to 4, 4a, 5 to 7, inclusive
 Drawing No. 2: Summary of Grain Size Analyses
 Grain Size Analyses Nos. 1 to 5, inclusive
 Drawing No. 3: Summary of Atterberg Limits

Distribution: IPC Energy [3]



Project No: SM 103792-G

Project: Wainfleet Wind Power

Location: Turbine No. 1

Client: IPC Energy

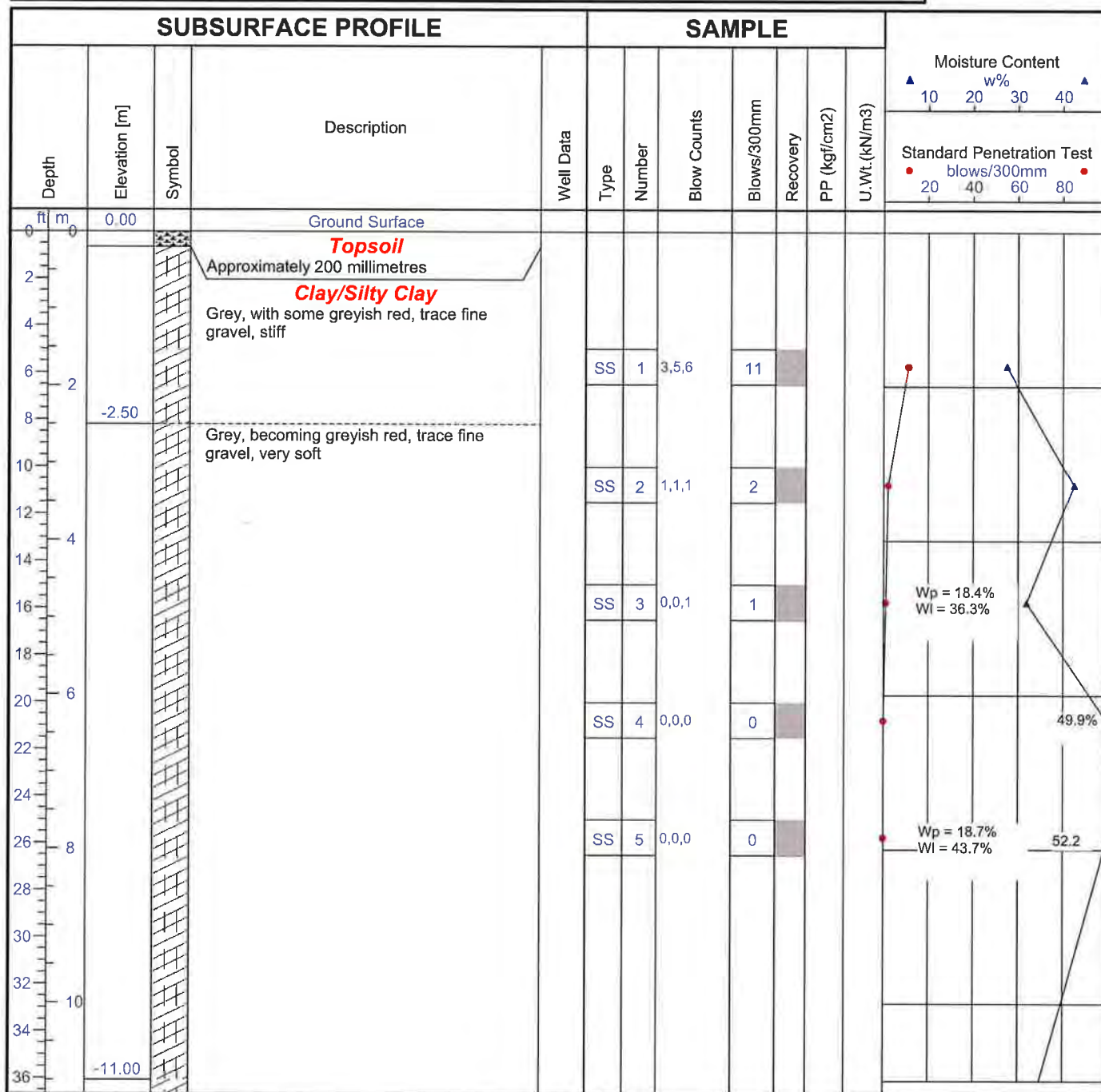
Log of Borehole No. 1

Borehole Location: See Drawing No. 1

: 4751252 N

:: 631359 E

Project Manager: Ian Shaw, P. Eng.



Drill Method: Hollow Stem Augers SOIL-MAT ENGINEERS & CONSULTANTS LTD.

Datum: Ground Surface

Drill Date: July 19, 2010

130 Lancing Drive, Hamilton, ON L8W 3A1

Phone: (905) 318-7440 Fax: (905) 318-7455

Checked by: IS

Hole Size: 200 millimetres

e-mail: info@soil-mat.on.ca

Sheet: 1 of 4

Project No: SM 103792-G

Project: Wainfleet Wind Power

Location: Turbine No. 1

Client: IPC Energy

Log of Borehole No. 1

Borehole Location: See Drawing No. 1

: 4751252 N

:: 631359 E

Project Manager: Ian Shaw, P. Eng.



SUBSURFACE PROFILE					SAMPLE												
Depth	Elevation [m]	Symbol	Description	Well Data	Type	Number	Blow Counts	Blows/300mm	Recovery	PP (kgf/cm2)	U.Wt.(kN/m3)	Moisture Content					
												▲	▲				
												10	20	30	40		
												Standard Penetration Test					
												●	●				
												20	40	60	80		
38			Clay/Silty Clay Grey and greyish red, trace fine gravel, very soft														
40																	
42	13																
44																	
46																	
48																	
50	15																
52																	
54																	
56	17																
58																	
60																	
62	19																
64																	
66																	
68	21																
70																	
72	-22.00																

Drill Method: Hollow Stem Augers SOIL-MAT ENGINEERS & CONSULTANTS LTD.

130 Lancing Drive, Hamilton, ON L8W 3A1

Drill Date: July 19, 2010

Phone: (905) 318-7440 Fax: (905) 318-7455

Hole Size: 200 millimetres

e-mail: info@soil-mat.on.ca

Datum: Ground Surface

Checked by: IS

Sheet: 2 of 4

Project No: SM 103792-G

Project: Wainfleet Wind Power

Location: Turbine No. 1

Client: IPC Energy

Log of Borehole No. 1

Borehole Location: See Drawing No. 1

: 4751252 N

:: 631359 E

Project Manager: Ian Shaw, P. Eng.



SUBSURFACE PROFILE					SAMPLE							Moisture Content																																																																																																																																																																																																																																																																																																																																																																																																																																																																																																																																																																																																																																																																																																																																																																																																																																																																																																																																																																																																																																																																																																																																																																																																																																																																																																																																																																					
Depth	Elevation [m]	Symbol	Description	Well Data	Type	Number	Blow Counts	Blows/300mm	Recovery	PP (kgf/cm2)	U.Wt. (kN/m3)	w%																																																																																																																																																																																																																																																																																																																																																																																																																																																																																																																																																																																																																																																																																																																																																																																																																																																																																																																																																																																																																																																																																																																																																																																																																																																																																																																																																																					
												10	20	30	40																																																																																																																																																																																																																																																																																																																																																																																																																																																																																																																																																																																																																																																																																																																																																																																																																																																																																																																																																																																																																																																																																																																																																																																																																																																																																																																																																																		
													Standard Penetration Test																																																																																																																																																																																																																																																																																																																																																																																																																																																																																																																																																																																																																																																																																																																																																																																																																																																																																																																																																																																																																																																																																																																																																																																																																																																																																																																																																																				
													blows/300mm																																																																																																																																																																																																																																																																																																																																																																																																																																																																																																																																																																																																																																																																																																																																																																																																																																																																																																																																																																																																																																																																																																																																																																																																																																																																																																																																																																				
													20	40	60	80																																																																																																																																																																																																																																																																																																																																																																																																																																																																																																																																																																																																																																																																																																																																																																																																																																																																																																																																																																																																																																																																																																																																																																																																																																																																																																																																																																	
74			Clay/Silty Clay Grey and greyish red, trace fine gravel, very soft																																																																																																																																																																																																																																																																																																																																																																																																																																																																																																																																																																																																																																																																																																																																																																																																																																																																																																																																																																																																																																																																																																																																																																																																																																																																																																																																																																														

Drill Method: Hollow Stem Augers SOIL-MAT ENGINEERS & CONSULTANTS LTD.

Drill Date: July 19, 2010

Hole Size: 200 millimetres

130 Lancing Drive, Hamilton, ON L8W 3A1
 Phone: (905) 318-7440 Fax: (905) 318-7455
 e-mail: info@soil-mat.on.ca

Datum: Ground Surface

Checked by: IS

Sheet: 3 of 4

Project Manager: Ian Shaw, P. Eng.



Project No: SM 103792-G

Project: Wainfleet Wind Power

Location: Turbine No. 2

Client: IPC Energy

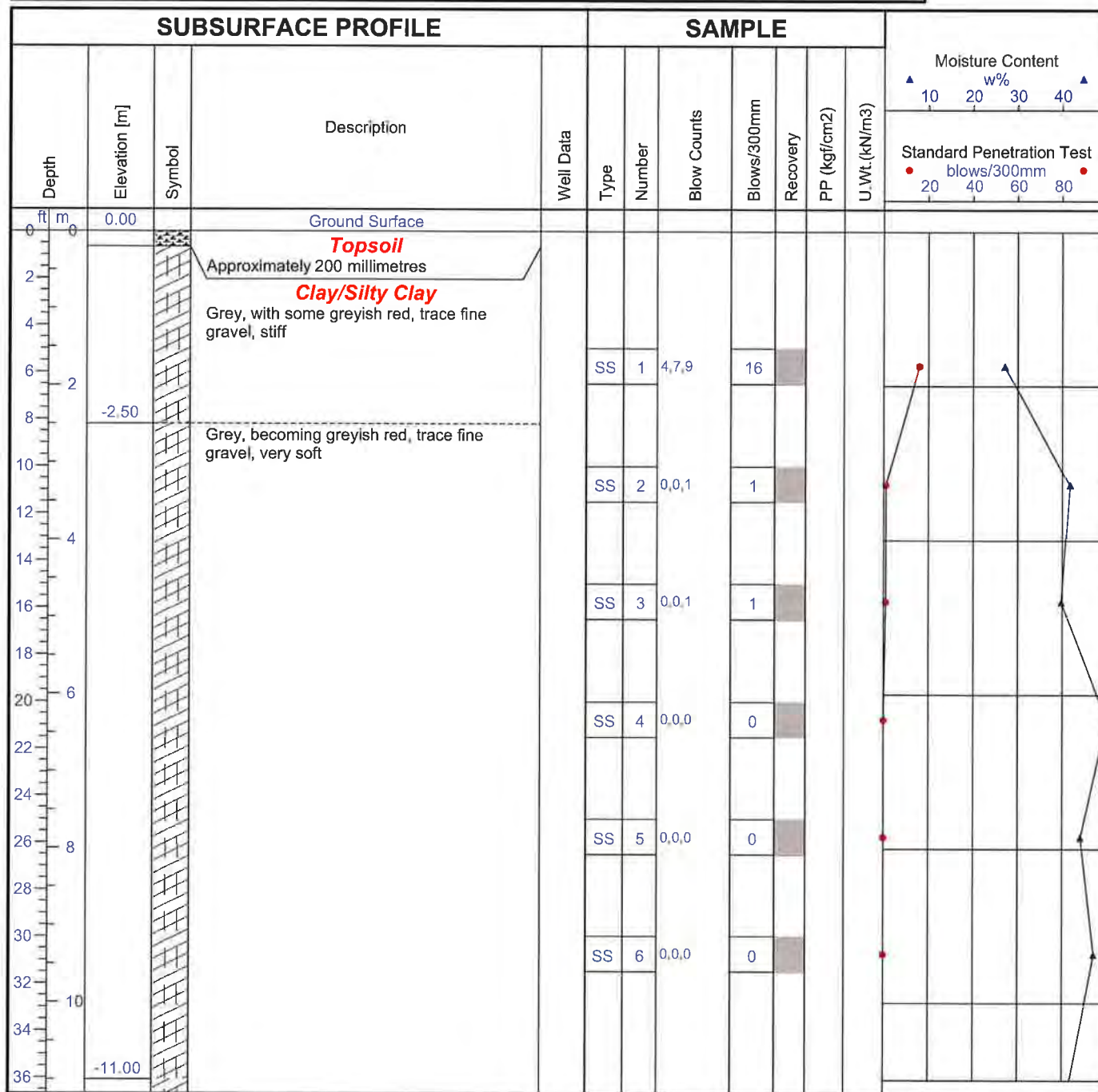
Log of Borehole No. 2

Borehole Location: See Drawing No. 1

: 4750750 N

:: 631758 E

Project Manager: Ian Shaw, P. Eng.



Drill Method: Hollow Stem Augers SOIL-MAT ENGINEERS & CONSULTANTS LTD.

Drill Date: July 15, 2010

Hole Size: 200 millimetres

 130 Lancing Drive, Hamilton, ON L8W 3A1
 Phone: (905) 318-7440 Fax: (905) 318-7455
 e-mail: info@soil-mat.on.ca

Datum: Ground Surface

Checked by: IS

Sheet: 1 of 5

Project No: SM 103792-G

Project: Wainfleet Wind Power

Location: Turbine No. 2

Client: IPC Energy

Log of Borehole No. 2

Borehole Location: See Drawing No. 1

: 4750750 N

:: 631758 E

Project Manager: Ian Shaw, P. Eng.



SUBSURFACE PROFILE					SAMPLE							
Depth	Elevation [m]	Symbol	Description	Well Data	Type	Number	Blow Counts	Blows/300mm	Recovery	PP (kgf/cm ²)	U Wt. (kN/m ³)	Molsture Content w% 10 20 30 40
												Standard Penetration Test blows/300mm 20 40 60 80
38			Clay/Silty Clay Grey and greyish red, trace fine gravel, very soft									
40												
42	13											
44												
46												
48												
50	15				SS	7	0,0,0	0				
52												
54												
56	17											
58												
60					SS	8	0,0,1	1				
62	19											
64												
66												
68												
70	21				SS	9	0,4,4	8				
72	-22.00											

Drill Method: Hollow Stem Augers SOIL-MAT ENGINEERS & CONSULTANTS LTD.

130 Lancing Drive, Hamilton, ON L8W 3A1

Drill Date: July 15, 2010

Phone: (905) 318-7440 Fax: (905) 318-7455

Hole Size: 200 millimetres

e-mail: info@soil-mat.on.ca

Datum: Ground Surface

Checked by: IS

Sheet: 2 of 5

Project No: SM 103792-G

Project: Wainfleet Wind Power

Location: Turbine No. 2

Client: IPC Energy

Log of Borehole No. 2

Borehole Location: See Drawing No. 1

: 4750750 N

:: 631758 E

Project Manager: Ian Shaw, P. Eng.



SUBSURFACE PROFILE				SAMPLE						Moisture Content	
Depth	Elevation [m]	Symbol	Description	Well Data	Type	Number	Blow Counts	Blows/300mm	Recovery	PP (kgf/cm ²)	U.Wt. (kN/m ³)
74			Clay/Silty Clay Grey and greyish red, trace fine gravel, very soft								
76											
78	24										
80					SS	10	1,2,3	5			
82											
84											
86	26										
88											
90											
92	28										
94											
96											
98	30										
00					SS	11	4,1,1	2			
02											
04	32										
06											
08	-33.00										

Drill Method: Hollow Stem Augers SOIL-MAT ENGINEERS & CONSULTANTS LTD.

Drill Date: July 15, 2010

Hole Size: 200 millimetres

 130 Lancing Drive, Hamilton, ON L8W 3A1
 Phone: (905) 318-7440 Fax: (905) 318-7455
 e-mail: info@soil-mat.on.ca

Datum: Ground Surface

Checked by: IS

Sheet: 3 of 5

Project No: SM 103792-G

Project: Wainfleet Wind Power

Location: Turbine No. 2

Client: IPC Energy

Log of Borehole No. 2

Borehole Location: See Drawing No. 1

: 4750750 N

: 631758 E

Project Manager: Ian Shaw, P. Eng.



SUBSURFACE PROFILE					SAMPLE							
Depth	Elevation [m]	Symbol	Description	Well Data	Type	Number	Blow Counts	Blows/300mm	Recovery	PP (kgf/cm ²)	U.Wt. (kN/m ³)	Moisture Content ▲ 10 20 30 40 ▲ w%
												Standard Penetration Test ● 20 40 60 80 ● blows/300mm
10			Clay/Silty Clay Grey and greyish red, trace fine gravel, very soft									
12												
14	35											
16												
18												
20					SS	12	0,3,2	5				
22	37											
24												
26												
28	39											
30												
32												
34	41											
36												
38												
40					SS	13	12,9,11	20				
42	43											
44												

Drill Method: Hollow Stem Augers SOIL-MAT ENGINEERS & CONSULTANTS LTD.

130 Lancing Drive, Hamilton, ON L8W 3A1

Drill Date: July 15, 2010

Phone: (905) 318-7440 Fax: (905) 318-7455

Hole Size: 200 millimetres

e-mail: info@soil-mat.on.ca

Datum: Ground Surface

Checked by: IS

Sheet: 4 of 5

Project No: SM 103792-G

Project: Wainfleet Wind Power

Location: Turbine No. 2

Client: IPC Energy

Log of Borehole No. 2

Borehole Location: See Drawing No. 1

: 4750750 N

: 631758 E

Project Manager: Ian Shaw, P. Eng.



SUBSURFACE PROFILE					SAMPLE						Moisture Content						
Depth	Elevation [m]	Symbol	Description	Well Data	Type	Number	Blow Counts	Blows/300mm	Recovery	PP (kgf/cm2)	U. Wt. (kN/m3)	w%					
												10	20	30	40		
												Standard Penetration Test					
												blows/300mm					
												20	40	60	80		
46																	
48	-45.10																
50			Limestone/Dolostone Bedrock		Nq	14		RQD									
52	46		Grey, fair to excellent quality, close to moderately spaced fractures, some gypsum below 47 metres, medium strength		Nq	15		70									
54																	
56																	
58	48				Nq	16		96									
60	-48.36																
62			End of Borehole														
64			NOTES:														
66			1. Borehole advanced using hollow stem continuous flight auger equipment on July 14, 2010 to a depth of 24.4 metres and washboring from 24.4 metres to refusal at a depth of 45.1 metres.														
68			2. Bedrock cored using Nq diamond core barrel equipment from a depth of 45.1 metres to a depth of 48.36 metres.														
70	52		3. Borehole backfilled as per Ontario Regulation 903.														
72			4. Soil samples will be discarded after three months unless otherwise directed by our client.														
74																	
76	54																
78																	
80																	

NOTES:

1. Borehole advanced using hollow stem continuous flight auger equipment on July 14, 2010 to a depth of 24.4 metres and washboring from 24.4 metres to refusal at a depth of 45.1 metres.

2. Bedrock cored using Nq diamond core barrel equipment from a depth of 45.1 metres to a depth of 48.36 metres.

3. Borehole backfilled as per Ontario Regulation 903.

4. Soil samples will be discarded after three months unless otherwise directed by our client.

Drill Method: Hollow Stem Augers SOIL-MAT ENGINEERS & CONSULTANTS LTD.

Datum: Ground Surface

Drill Date: July 15, 2010

130 Lancing Drive, Hamilton, ON L8W 3A1

Phone: (905) 318-7440 Fax: (905) 318-7455

Checked by: IS

Hole Size: 200 millimetres

e-mail: info@soil-mat.on.ca

Sheet: 5 of 5

Project No: SM 103792-G

Project: Wainfleet Wind Power

Location: Turbine No. 3

Client: IPC Engergy

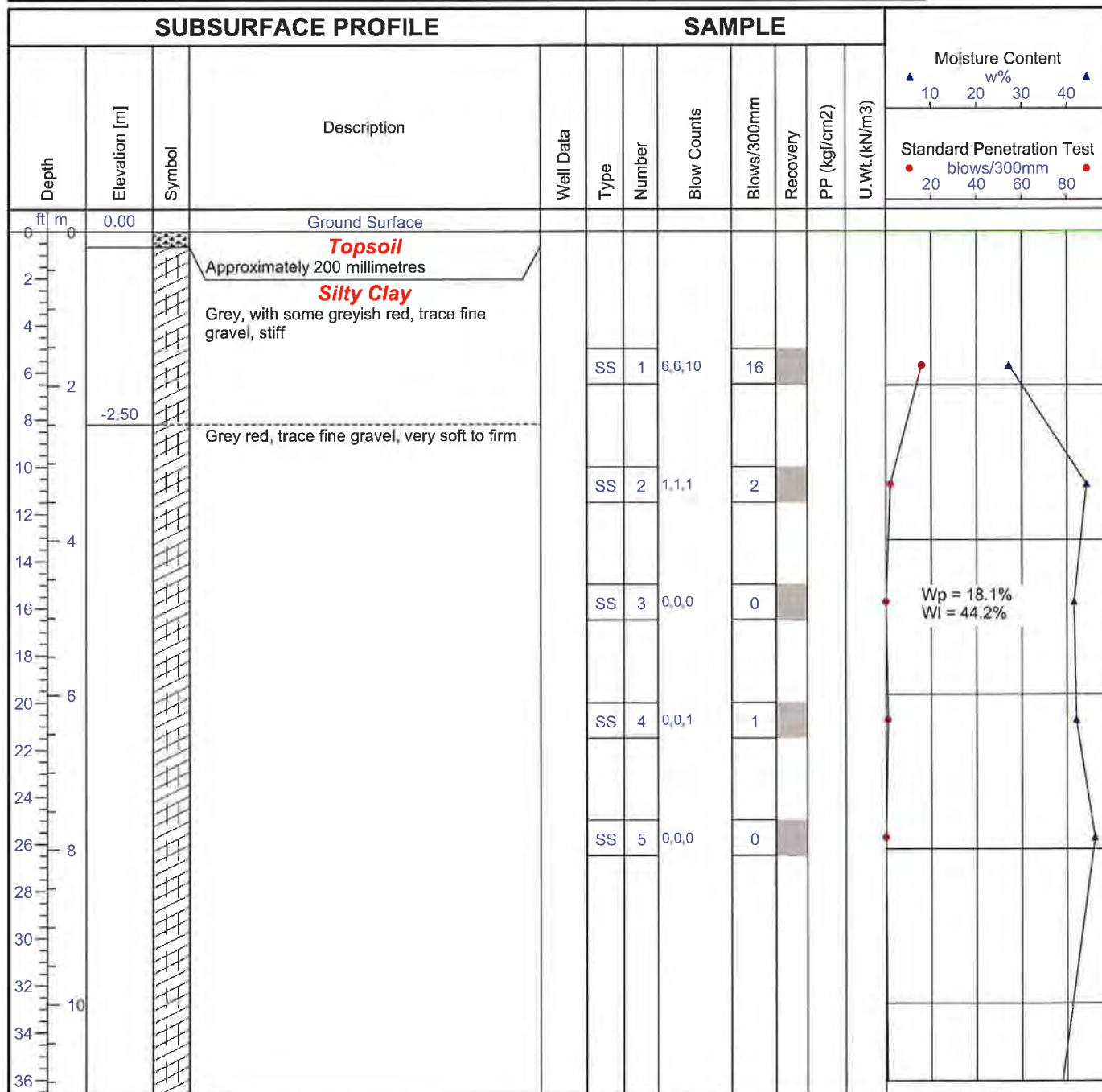
Log of Borehole No. 3

Borehole Location: See Drawing No. 1

: 4750541 N

:: 631921 E

Project Manager: Ian Shaw, P. Eng.



Drill Method: Hollow Stem Augers SOIL-MAT ENGINEERS & CONSULTANTS LTD.

130 Lancing Drive, Hamilton, ON L8W 3A1

Drill Date: July 14, 2010

Phone: (905) 318-7440 Fax: (905) 318-7455

Hole Size: 200 millimetres

e-mail: info@soil-mat.on.ca

Datum: Ground Surface

Checked by: IS

Sheet: 1 of 4

Project No: SM 103792-G**Project:** Wainfleet Wind Power**Location:** Turbine No. 3**Client:** IPC Energy**Log of Borehole No. 3****Borehole Location:** See Drawing No. 1

: 4750541 N

:: 631921 E

Project Manager: Ian Shaw, P. Eng.

SUBSURFACE PROFILE					SAMPLE							Moisture Content	
Depth	Elevation [m]	Symbol	Description	Well Data	Type	Number	Blow Counts	Blows/300mm	Recovery	PP (kgf/cm2)	U.Wt. (kN/m3)	Standard Penetration Test	
												w%	blows/300mm
38												▲	▲
40													
42	13					SS	6	0,0,1	1				●
44													
46													
48													
50	15												
52													
54													
56	17												
58													
60													
62	19					SS	7	0,1,2	3				●
64													
66													
68													
70	21												
72						SS	8	0,0,3	3				●

Wp = 16.6%
WI = 35.5%

Wp = 16.6%
 WI = 35.5%

Drill Method: Hollow Stem Augers SOIL-MAT ENGINEERS & CONSULTANTS LTD.

130 Lancing Drive, Hamilton, ON L8W 3A1

Phone: (905) 318-7440 Fax: (905) 318-7455

e-mail: info@soil-mat.on.ca

Datum: Ground Surface

Drill Date: July 14, 2010

Checked by: IS

Hole Size: 200 millimetres

Sheet: 2 of 4

Project No: SM 103792-G

Project: Wainfleet Wind Power

Location: Turbine No. 3

Client: IPC Energy

Log of Borehole No. 3

Borehole Location: See Drawing No. 1

: 4750541 N

:: 631921 E

Project Manager: Ian Shaw, P. Eng.



SUBSURFACE PROFILE					SAMPLE							Moisture Content			
Depth	Elevation [m]	Symbol	Description	Well Data	Type	Number	Blow Counts	Blows/300mm	Recovery	PP (kgf/cm2)	U.Wt. (kN/m3)	w%			
												10	20	30	40
												Standard Penetration Test			
												blows/300mm			
												20	40	60	80
74															
76															
78	24														
80						SS	9	1,2,4	6						
82															
84															
86	26					DC	10		11						
88						DC	11		14						
90						DC	12		18						
92	28					DC	13		19						
94						DC	14		20						
96						DC	15		22						
98						DC	16		24						
00	30					DC	17		24						
02						DC	18		27						
04						DC	19		31						
06						DC	20		31						
08						DC	21		32						
						DC	22		33						
						DC	23		36						
						DC	24		34						
						DC	25		38						
						DC	26		42						
						DC	27		40						
						DC	28		39						
						DC	29		44						
						DC	30		45						
						DC	31		51						
						DC	32		51						
						DC	33		49						

Drill Method: Hollow Stem Augers SOIL-MAT ENGINEERS & CONSULTANTS LTD.

130 Lancing Drive, Hamilton, ON L8W 3A1

Drill Date: July 14, 2010

Phone: (905) 318-7440 Fax: (905) 318-7455

Hole Size: 200 millimetres

e-mail: info@soil-mat.on.ca

Datum: Ground Surface

Checked by: IS

Sheet: 3 of 4

Project No: SM 103792-G

Project: Wainfleet Wind Power

Location: Turbine No. 3

Client: IPC Energy

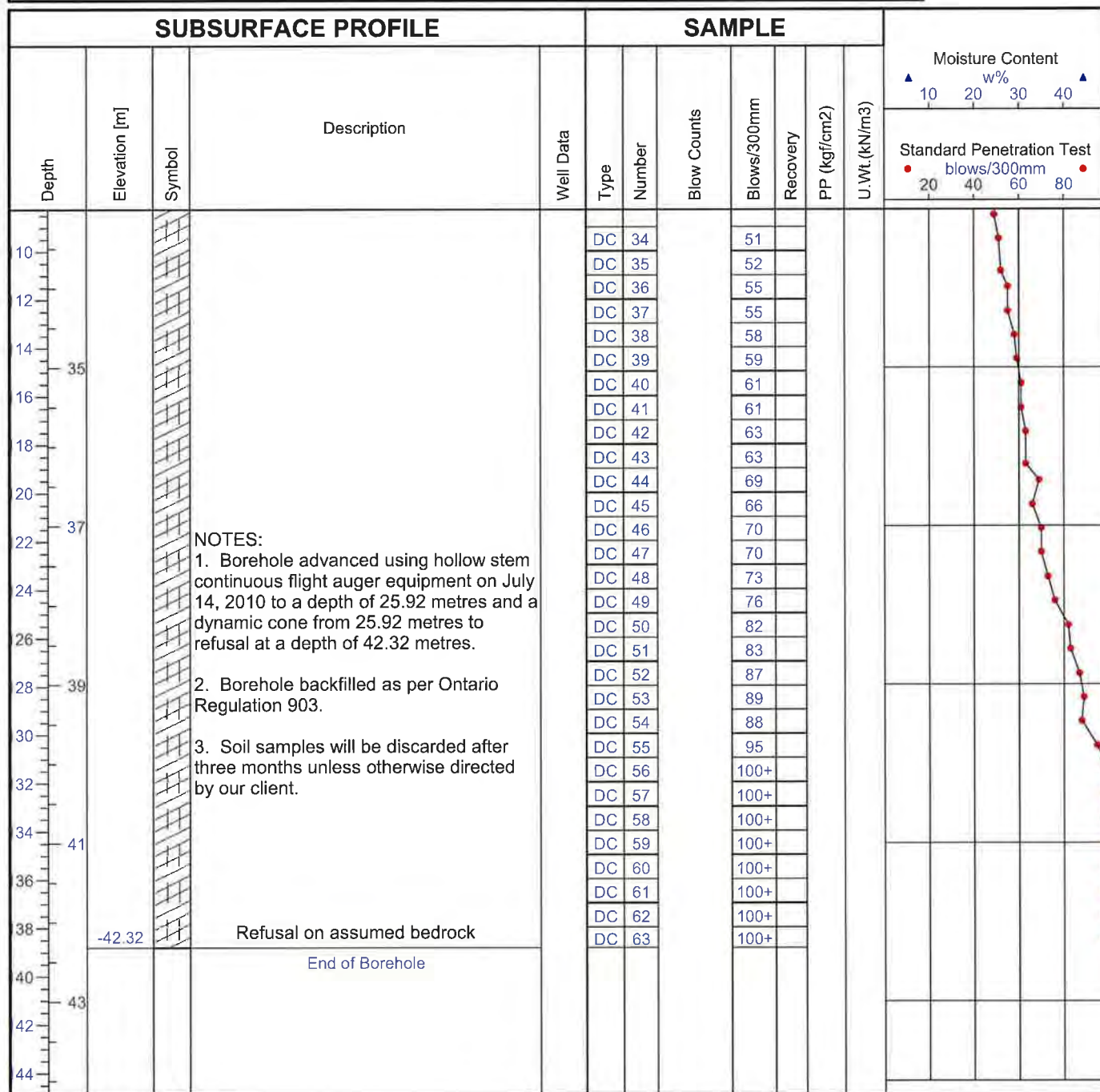
Log of Borehole No. 3

Borehole Location: See Drawing No. 1

: 4750541 N

:: 631921 E

Project Manager: Ian Shaw, P. Eng.



Drill Method: Hollow Stem Augers SOIL-MAT ENGINEERS & CONSULTANTS LTD.

Drill Date: July 14, 2010

Hole Size: 200 millimetres

 130 Lancing Drive, Hamilton, ON L8W 3A1
 Phone: (905) 318-7440 Fax: (905) 318-7455
 e-mail: info@soil-mat.on.ca

Datum: Ground Surface

Checked by: IS

Sheet: 4 of 4

Project No: SM 103792-G

Project: Wainfleet Wind Power

Location: Turbine No. 4

Client: IPC Energy

Log of Borehole No. 4

Borehole Location: See Drawing No. 1

: 4748392 N

: 632744 E

Project Manager: Ian Shaw, P. Eng.



SUBSURFACE PROFILE					SAMPLE						Moisture Content			
Depth	Elevation [m]	Symbol	Description	Well Data	Type	Number	Blow Counts	Blows/300mm	Recovery	PP (kgf/cm2)	U. Wt. (kN/m3)	w%		
												▲	▲	
													Standard Penetration Test	
													●	●
													blows/300mm	
													20	80
													40	60
0	0.00		Ground Surface											
0	-0.20		Topsoil Approximately 200 millimetres											
2			Silty Clay Brown, with some grey and red, trace fine gravel											
4					AS	1								
6														
8	-2.50		Reddish grey, with some sandy silt, trace fine gravel											
10					AS	2								
12														
14														
16					AS	3								
18	-5.50		Sandy Silt Greyish red, trace clay, trace fine gravel											
20					AS	4								
22														
24														
26	-8.00		Clay/Silty Clay Greyish red, trace fine gravel, soft											
28														
30														
32	-10.00													

Drill Method: Solid Stem Augers

Drill Date: July 20, 2010

Hole Size: 150 millimetres

SOIL-MAT ENGINEERS & CONSULTANTS LTD.
 130 Lancing Drive, Hamilton, ON L8W 3A1
 Phone: (905) 318-7440 Fax: (905) 318-7455
 e-mail: info@soil-mat.on.ca

Datum: Ground Surface

Checked by: IS

Sheet: 1 of 2

Project No: SM 103792-G

Project: Wainfleet Wind Power

Location: Turbine No. 4

Client: IPC Energy

Log of Borehole No. 4

Borehole Location: See Drawing No. 1

: 4748392 N

:: 632744 E

Project Manager: Ian Shaw, P. Eng.



SUBSURFACE PROFILE					SAMPLE							Moisture Content			
Depth	Elevation [m]	Symbol	Description	Well Data	Type	Number	Blow Counts	Blows/300mm	Recovery	PP (kgf/cm ²)	U.Wt (kN/m ³)	w%			
												Standard Penetration Test			
												blows/300mm			
34			Clay/Silty Clay												
36			Greyish red, trace fine gravel, soft												
38															
40	12														
42															
44															
46	14														
48															
50															
52	16														
54	-16.35		Refusal on assumed bedrock												
56			End of Borehole												
58			NOTES:												
60	18		1. Borehole advanced using solid stem continuous flight auger equipment on July 20, 2010 to refusal at a depth of 16.35 metres.												
62			2. Borehole dry on completion and backfilled as per Ontario Regulation 903.												
64			3. Soil samples will be discarded after three months unless otherwise directed by our client.												

Drill Method: Solid Stem Augers

Drill Date: July 20, 2010

Hole Size: 150 millimetres

SOIL-MAT ENGINEERS & CONSULTANTS LTD.

130 Lancing Drive, Hamilton, ON L8W 3A1

Phone: (905) 318-7440 Fax: (905) 318-7455

e-mail: info@soil-mat.on.ca

Datum: Ground Surface

Checked by: IS

Sheet: 2 of 2

Project Manager: Ian Shaw, P. Eng.

Drill Method: Solid Stem Augers	SOIL-MAT ENGINEERS & CONSULTANTS LTD.	Datum: Ground Surface
Drill Date: July 20, 2010	130 Lancing Drive, Hamilton, ON L8W 3A1	Checked by: IS
Hole Size: 150 millimetres	Phone: (905) 318-7440 Fax: (905) 318-7455	Sheet: 1 of 2
	e-mail: info@soil-mat.on.ca	

Project No: SM 103792-G

Project: Wainfleet Wind Power

Location: Turbine No. 4

Client: IPC Energy

Log of Borehole No. 4a

Borehole Location: See Drawing No. 1

: 4748392 N

:: 632794 E

Project Manager: Ian Shaw, P. Eng.



SUBSURFACE PROFILE					SAMPLE							Moisture Content w% ▲ 10 20 30 40 ▲			
Depth	Elevation [m]	Symbol	Description	Well Data	Type	Number	Blow Counts	Blows/300mm	Recovery	PP (kgf/cm ²)	U.Wt. (kN/m ³)	Standard Penetration Test ● blows/300mm ● 20 40 60 80			
34			Clay/Silty Clay Greyish red, trace fine gravel, soft												
36															
38															
40	12														
42															
44															
46	14														
48															
50															
52	16														
54	-16.71		Refusal on assumed bedrock												
56			End of Borehole												
58															
60	18														
62															
64															

NOTES:

1. Borehole advanced using solid stem continuous flight auger equipment on July 20, 2010 to refusal at a depth of 16.71 metres.
2. Soil conditions were observed from auger cuttings and from Borehole No. 4.
3. Borehole dry on completion and backfilled as per Ontario Regulation 903.
4. Soil samples will be discarded after three months unless otherwise directed by our client.

Drill Method: Solid Stem Augers

Drill Date: July 20, 2010

Hole Size: 150 millimetres

SOIL-MAT ENGINEERS & CONSULTANTS LTD.
 130 Lancing Drive, Hamilton, ON L8W 3A1
 Phone: (905) 318-7440 Fax: (905) 318-7455
 e-mail: info@soil-mat.on.ca

Datum: Ground Surface

Checked by: IS

Sheet: 2 of 2

Project No: SM 103792-G

Project: Wainfleet Wind Power

Location: Turbine No. 5

Client: IPC Energy

Log of Borehole No. 5

Borehole Location: See Drawing No. 1

: 4748817 N

: 632706 E

Project Manager: Ian Shaw, P. Eng.



SUBSURFACE PROFILE					SAMPLE						Moisture Content	
Depth	Elevation [m]	Symbol	Description	Well Data	Type	Number	Blow Counts	Blows/300mm	Recovery	PP (kgf/cm ²)	U.Wt. (kN/m ³)	w%
ft m	0.00 -0.20		Ground Surface									10 20 30 40
0			Topsoil Approximately 200 millimetres									
2			Silty Clay Brown, with some grey and red, trace fine gravel, very stiff									
4												
6	-1.80		Sandy Silt Brownish red, compact		SS	1	6,8,14	22				
8												
10	-3.30		Silty Clay Brownish red, trace fine gravel		AS	2						
12												
14	-4.00		Sandy Silt Greyish red, trace clay		AS	3						
16												
18	-5.50		Clay/Silty Clay Greyish red, trace fine gravel, soft		AS	4						
20												
22												
24												
26												
28												
30	-9.45		Refusal on assumed bedrock									
32			End of Borehole									

NOTES:

1. Borehole advanced using solid stem continuous flight auger equipment on July 20, 2010 to refusal at a depth of 9.45 metres.

2. Borehole dry on completion and backfilled as per Ontario Regulation 903.

3. Soil samples will be discarded after three months unless otherwise directed by our client.

Drill Method: Solid Stem Augers

Drill Date: July 20, 2010

Hole Size: 150 millimetres

SOIL-MAT ENGINEERS & CONSULTANTS LTD.
130 Lancing Drive, Hamilton, ON L8W 3A1
Phone: (905) 318-7440 Fax: (905) 318-7455
e-mail: info@soil-mat.on.ca

Datum: Ground Surface

Checked by: IS

Sheet: 1 of 1

Project No: SM 103792-G

Project: Wainfleet Wind Power

Location:

Client: IPC Energy

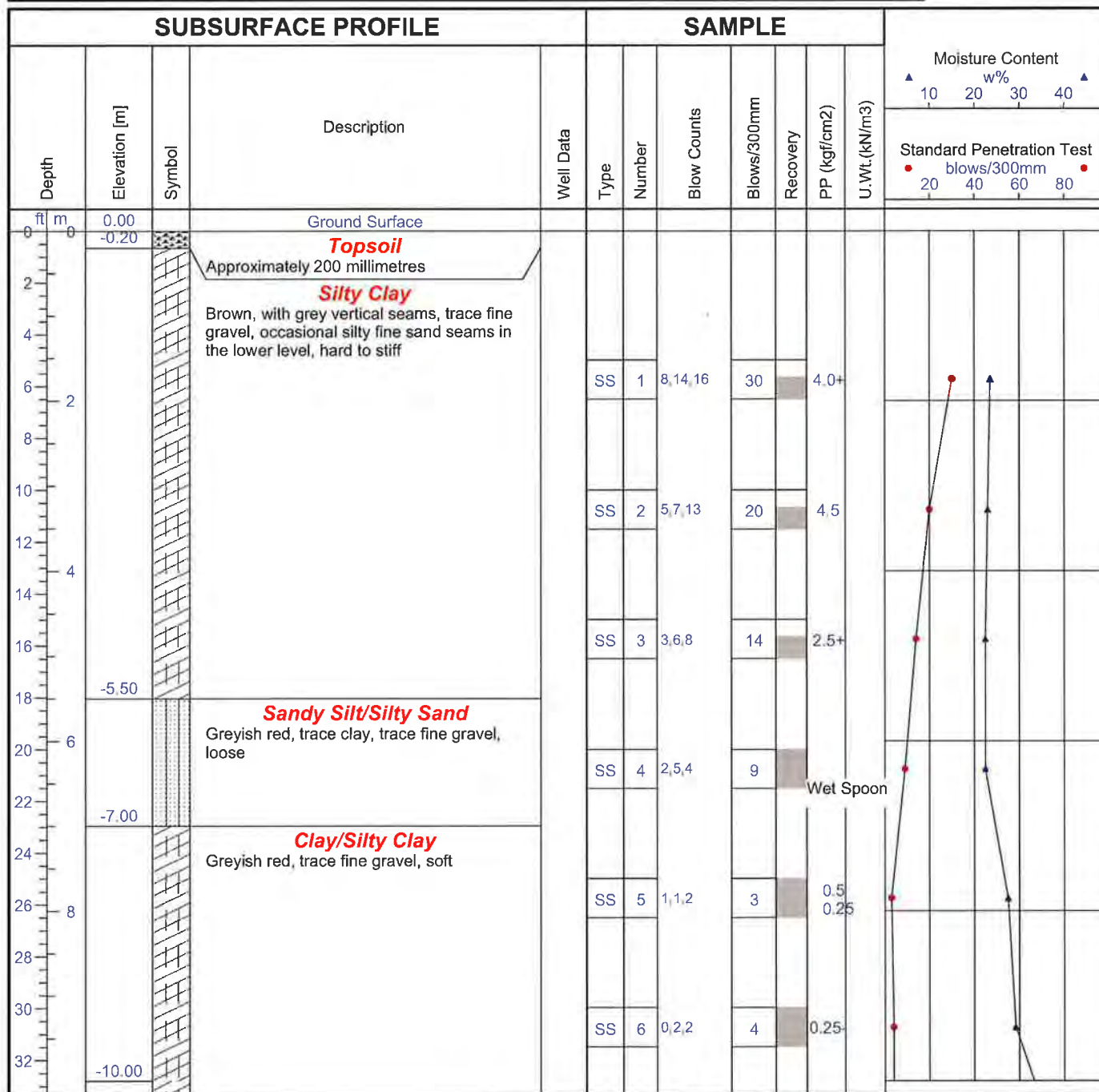
Log of Borehole No. 6

Borehole Location: See Drawing No. 1

: 4748600 N

:: 632800 E

Project Manager: Ian Shaw, P. Eng.



Drill Method: Solid Stem Augers

Drill Date: June 24, 2010

Hole Size: 150 millimetres

SOIL-MAT ENGINEERS & CONSULTANTS LTD.

130 Lancing Drive, Hamilton, ON L8W 3A1

Phone: (905) 318-7440 Fax: (905) 318-7455

e-mail: info@soil-mat.on.ca

Datum: Ground Surface

Checked by: IS

Sheet: 1 of 2

Project No: SM 103792-G

Project: Wainfleet Wind Power

Location:

Client: IPC Energy

Log of Borehole No. 6

Borehole Location: See Drawing No. 1

: 4748600 N

: 632800 E

Project Manager: Ian Shaw, P. Eng.



SUBSURFACE PROFILE					SAMPLE								
Depth	Elevation [m]	Symbol	Description	Well Data	Type	Number	Blow Counts	Blows/300mm	Recovery	PP (kgf/cm ²)	U. Wt. (kN/m ³)	Moisture Content w%	
												10	20
												30	40
												Standard Penetration Test blows/300mm	
												20	40
												60	80
34			Clay/Silty Clay Greyish red, trace fine gravel, soft										
36					SS	7	3,1,2,2	3		0.5			
38													
40	12												
42													
44	-13.40		Refusal on assumed bedrock										
46			End of Borehole										
48													
50													
52	16		NOTES:										
54			1. Borehole advanced using solid stem continuous flight auger equipment on June 24, 2010 to refusal at a depth of 13.4 metres.										
56			2. Borehole dry on completion and backfilled as per Ontario Regulation 903.										
58			3. Soil samples will be discarded after three months unless otherwise directed by our client.										
60	18		4. UTM Coordinates are approximate.										
62													
64													

Drill Method: Solid Stem Augers

Drill Date: June 24, 2010

Hole Size: 150 millimetres

SOIL-MAT ENGINEERS & CONSULTANTS LTD.
 130 Lancing Drive, Hamilton, ON L8W 3A1
 Phone: (905) 318-7440 Fax: (905) 318-7455
 e-mail: info@soil-mat.on.ca

Datum: Ground Surface

Checked by: IS

Sheet: 2 of 2

Project No: SM 103792-G

Project: Wainfleet Wind Power

Location:

Client: IPC Energy

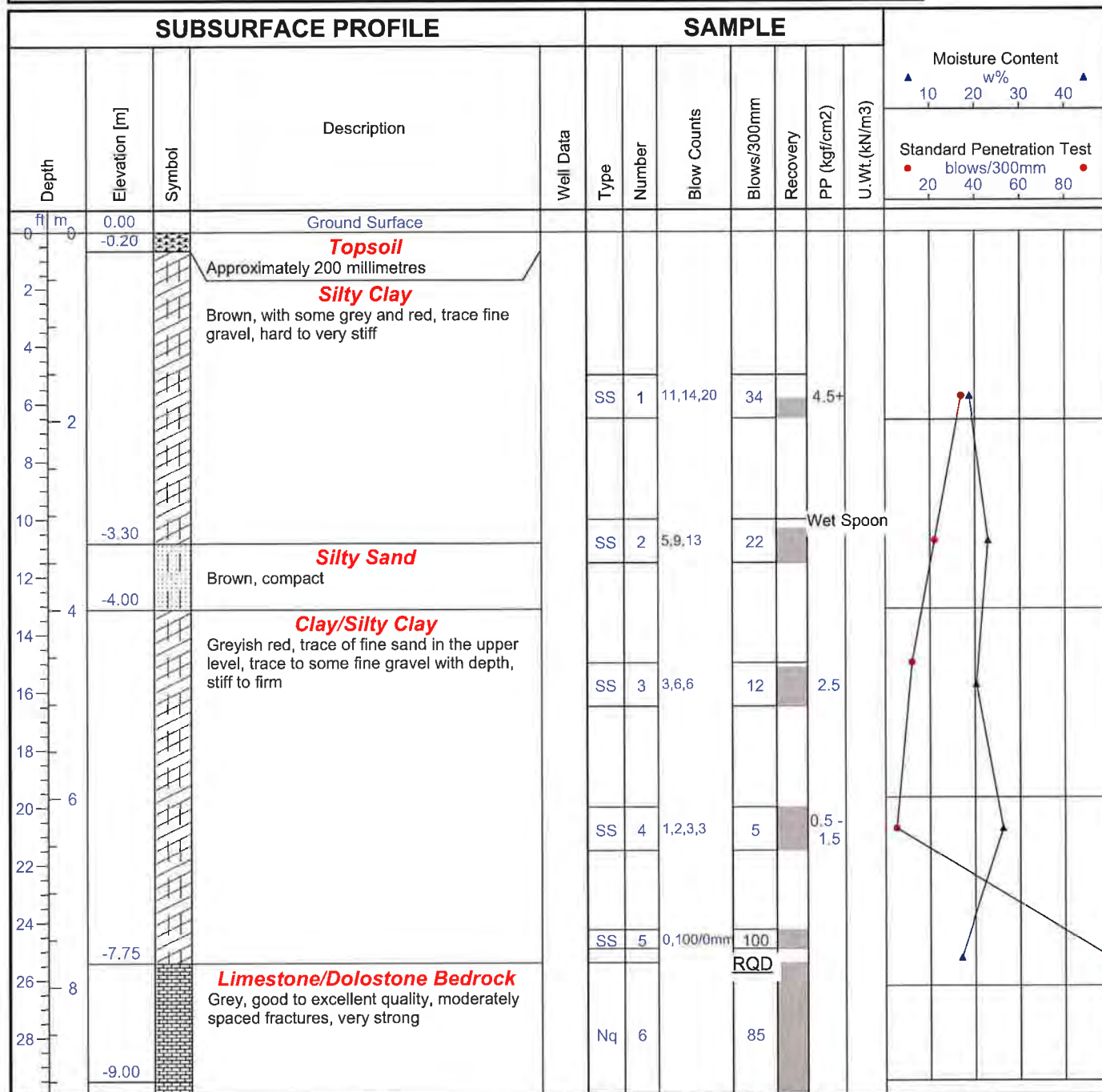
Log of Borehole No. 7

Borehole Location: See Drawing No. 1

: 4749010 N

:: 632700 E

Project Manager: Ian Shaw, P. Eng.



Drill Method: Solid Stem Augers

Drill Date: June 24, 2010

Hole Size: 150 millimetres

SOIL-MAT ENGINEERS & CONSULTANTS LTD.
 130 Lancing Drive, Hamilton, ON L8W 3A1
 Phone: (905) 318-7440 Fax: (905) 318-7455
 e-mail: info@soil-mat.on.ca

Datum: Ground Surface

Checked by: IS

Sheet: 1 of 2

Project No: SM 103792-G

Log of Borehole No. 7

Project: Wainfleet Wind Power

Borehole Location: See Drawing No. 1

Location:


: 4749010 N

: 632700 E

Client: IPC Energy

Project Manager: Ian Shaw, P. Eng.



SUBSURFACE PROFILE					SAMPLE						Moisture Content					
Depth	Elevation [m]	Symbol	Description	Well Data	Type	Number	Blow Counts	Blows/300mm	Recovery	PP (kgf/cm2)	U.Wt. (kN/m3)	w%				
												Standard Penetration Test				
												blows/300mm				
												10	20	30	40	
												20	40	60	80	
31			Limestone/Dolostone Bedrock Grey, good to excellent quality, moderately spaced fractures, very strong					RQD								
33																
35	-10.75					Nq	7		95							
37	11		End of Borehole													
39																
41																
43	13															
45			NOTES:													
47			1. Borehole advanced using solid stem continuous flight auger equipment on June 24, 2010 to refusal at a depth of 7.8 metres. Bedrock cored using Nq diamond core barrel equipment from a depth of 7.75 to 10.75 metres on June 25, 2010.													
49	15		2. On completion of drilling the borehole caved to a depth of 6.7 metres and groundwater was present at a depth of 6.55 metres. The borehole was backfilled as per Ontario Regulation 903.													
51			3. Soil samples will be discarded after three months unless otherwise directed by our client.													
53			4. UTM Coordinates are approximate.													
55	17															
57																
59																

Drill Method: Solid Stem Augers

SOIL-MAT ENGINEERS & CONSULTANTS LTD.

Datum: Ground Surface

Drill Date: June 24, 2010

130 Lancing Drive, Hamilton, ON L8W 3A1

Checked by: IS

Hole Size: 150 millimetres

Phone: (905) 318-7440 Fax: (905) 318-7455

e-mail: info@soil-mat.on.ca

Sheet: 2 of 2

BH	Sample	Depth [m]	Particle Distribution [%]				C _u	C _c	D ₁₀ [mm]
			Clay	Silt	Sand	Gravel			
1	SS3	4.6 - 5.1	59	40	1	0	320	31.3	<0.0005
1	SS5	9.15-9.6	79	20	1	0	8	3.1	<0.0005
3	SS3	4.6 - 5.1	67	32	1	0	2.8	0.7	<0.0005
3	SS7	18.3-18.7	44	55	1	0	15	0.1	<0.0005
7	SS3	4.6 - 5.1	21	77	2	0	28	3.4	<0.0005

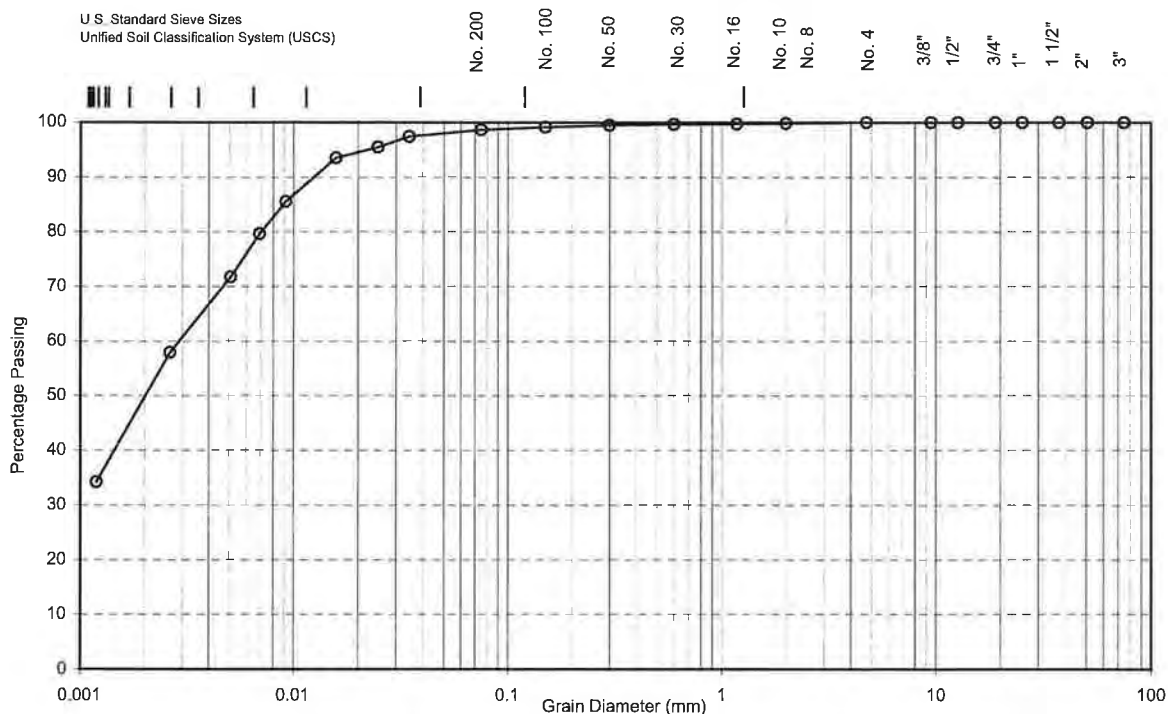
SOIL-MAT ENGINEERS & CONSULTANTS LTD.
Grain Size Analyses
Wainfleet Wind Power Project
Client: IPC Energy

Project No.: SM 103792-G

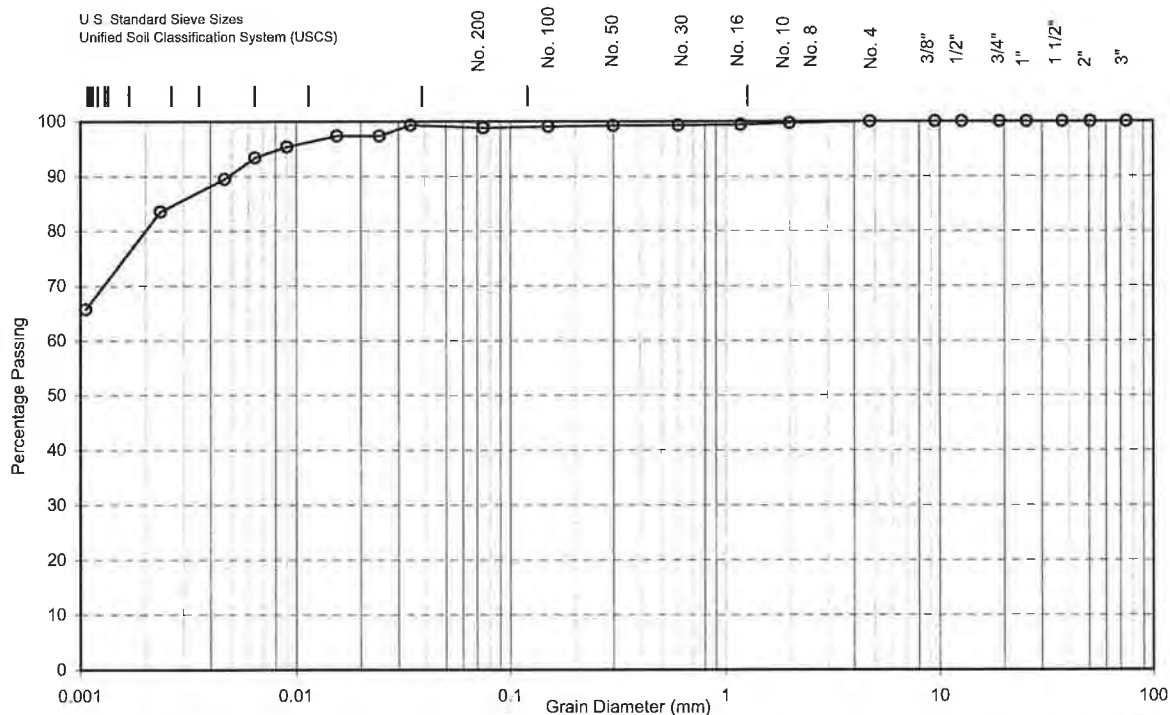
July 2010


Drawing No. 2

Mechanical & Hydrometer Analyses



Mechanical & Hydrometer Analyses



CLAY	SILT	FINE	MEDIUM	COARSE	FINE	COARSE
		SAND			GRAVEL	

Sample No.:	5	Notes: Sample retrieved by Soil-Mat laboratory on June 24 and July 21, 2010	
Borehole No.:	1		
Depth (ft):	30-31.5		
CLAY [%]:	79	Soil Description: Greyish Brown CLAY with some Silt and trace Sand CL - inorganic Clays, silty clays with low to medium plasticity	
SILT [%]:	20		
SAND [%]:	1		
GRAVEL [%]:	0		
D_{10} (Effective Diam. in mm):	0.0001	Estimated T Time [min/cm]:	Estimated Permeability, k [cm/s] $<10^{-8}$
		Coefficient of Uniformity C_u :	Coefficient of Curvature C_c :
		8.0	3.1

SOIL-MAT ENGINEERS & CONSULTANTS LTD.

Wainfleet Wind Power Project

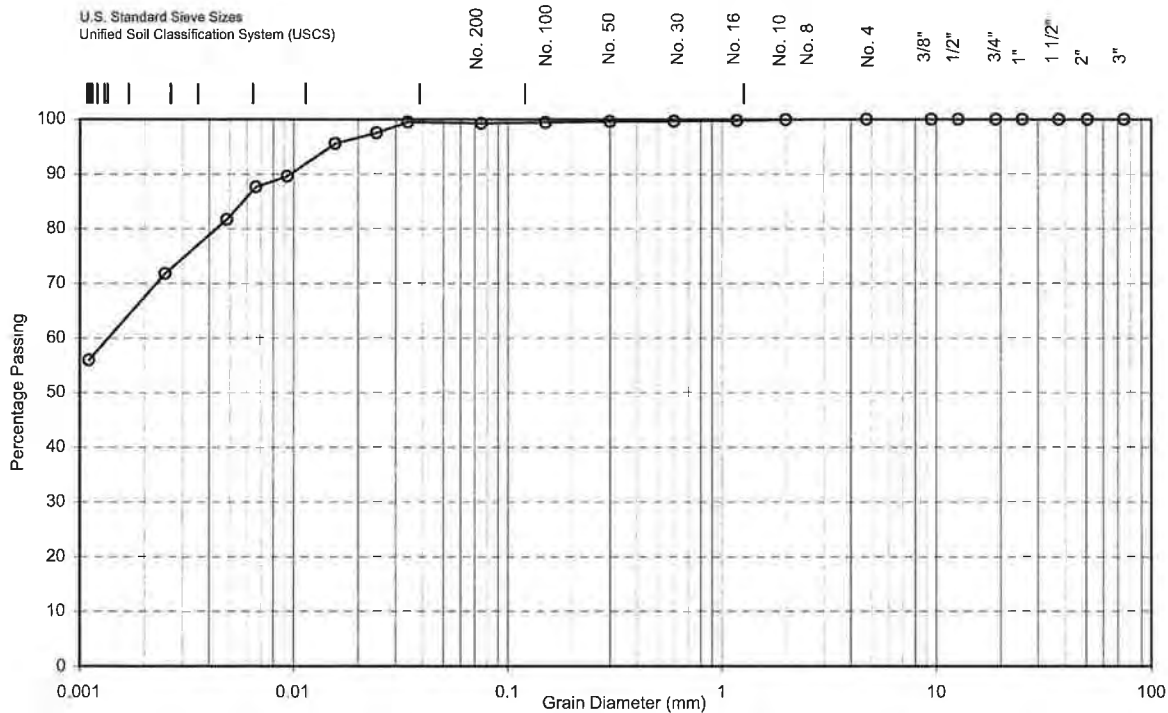


July 23, 2010

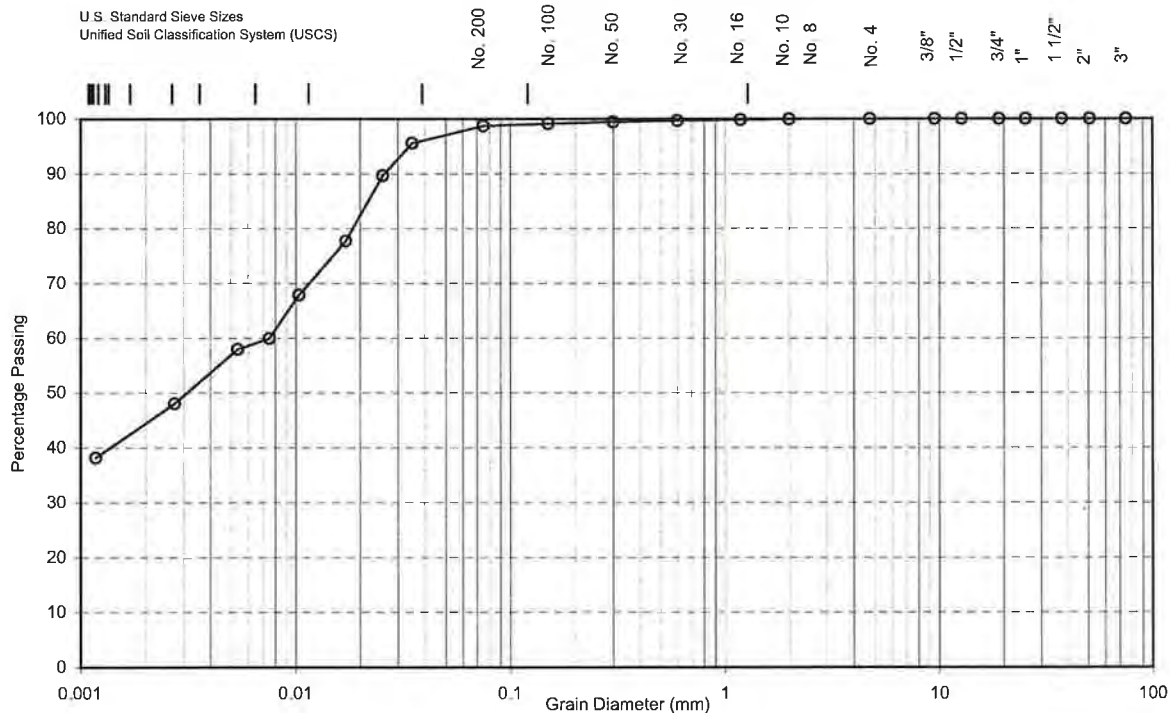
Grain Size Analysis No. 1

Project No.: SM 103792-G

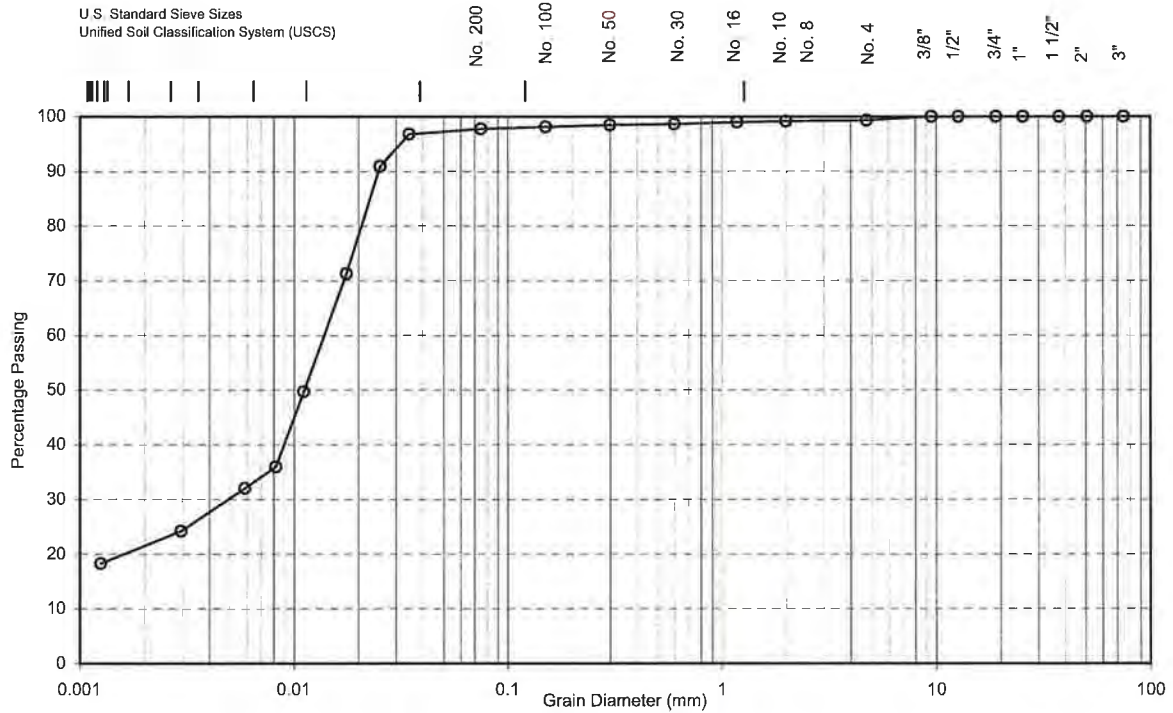
Mechanical & Hydrometer Analyses




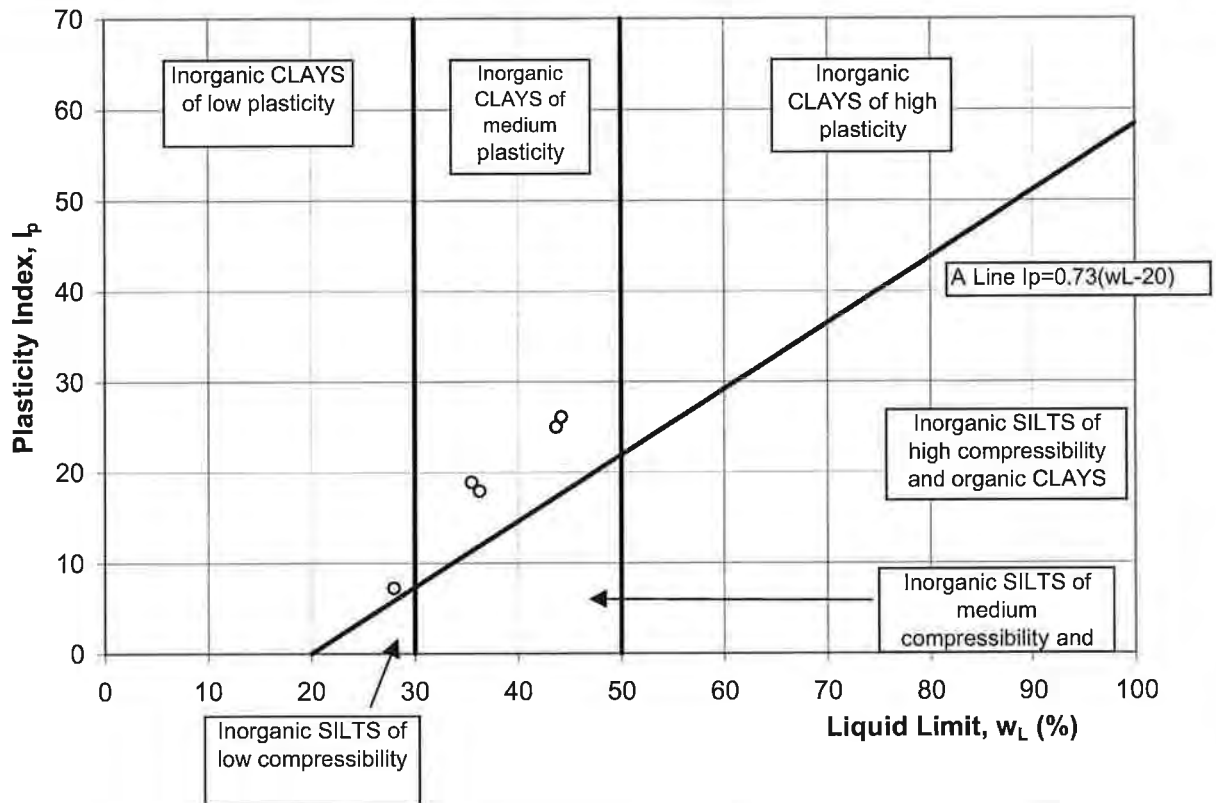
Mechanical & Hydrometer Analyses



Mechanical & Hydrometer Analyses



Sample No.:	3	Notes: Sample retrieved by Soil-Mat laboratory on June 24 and July 21, 2010			
Borehole No.:	7				
Depth [ft]:	15				
CLAY [%]:	21	Soil Description: Greyish Brown Clayey SILT with trace Sand CL - inorganic Clays, silty clays with low to medium plasticity ML - Inorganic Silts very fine sands, clayey silts with slight plasticity			
SILT [%]:	77				
SAND [%]:	2				
GRAVEL [%]:	0				
D ₁₀ (Effective Diam. in mm):	0.0005	Estimated <i>T</i> Time [min/cm] :	Estimated <i>Permeability</i> , <i>k</i> [cm/s]	10 ⁻⁸	
		Coefficient of Uniformity C _u :	28.0	Coefficient of Curvature C _c :	3.4
SOIL-MAT ENGINEERS & CONSULTANTS LTD.					
Wainfleet Wind Power Project					
July 23, 2010		Grain Size Analysis No. 1		Project No.: SM 103792-G	



Atterberg Limits					
Sample No.	Sample ID	Depth [m]	Liquid Limit w_L	Plastic Limit w_p	Plasticity Index I_p
1	BH1SS3	4.6 - 5.1	36.3	18.4	17.9
2	BH1SS5	9.15 - 9.6	43.7	18.7	25.0
3	BH3SS3	4.6 - 5.1	44.2	18.1	26.1
4	BH3SS7	18.3 - 18.7	35.5	16.6	18.9
5	BH7SS3	4.6 - 5.1	28.0	20.8	7.2

SOIL-MAT ENGINEERS & CONSULTANTS LTD.

Atterberg Limits - Plasticity Chart

Wainfleet Wind Power Project

Client: IPC Energy

Project No.: SM 103792-G

July 2010



Drawing No. 3



HAF & Wainfleet Transportation Survey

Date:	Nov. 11, 2010
Project Scope:	Transportation of components from Trillium Rail Terminal located near Welland, ON to site HAF near Abingdon, ON and/or to site Wainfleet near Ostrtyhon Corners, ON. (Expect Base section. To be shipped from Vestas Pueblo, CO.)
Destination:	Abingdon, ON is located approximately 90 kms SW of Toronto, ON and Wainfleet, ON is located approximately 130kms SW of Toronto, ON
Turbine Type:	5 x 1.8MW V100 Turbines and 95m Towers for each project
Survey Dates:	Transera's Craig Ball conducted the preliminary survey of the rail siding and primary roads to proposed wind farm sites.

Survey Review

The transportation of a V100 Wind Turbine can be broken down into the following service categories. Each of these categories represents a phase of the ground operations. These categories are:

1. Turbine specifications.
2. Trillium Rail siding layout.
3. Offloading of rail car specifications and requirements.
4. Routing of turbines to site.
5. Turbine transport obstacles along the route.
6. Proposed site report.
7. Conclusion.
8. Picture Summary.

1. Turbine Specifications

V90 Turbine Specifications

Commodity: V100 1.8MW Wind Turbines – Graph A

		Dimensions (Meters and Kgs)					Dimensions (Feet and lbs)			
Qty	Description	Length	Width	Height	Weight	Volume	Length	Width	Height	Weight
5	Nacelle	10.45	3.51	3.82	72,300	140.116	34.29	11.52	12.53	159,465
15	Blade	49.18	3.10	3.00	9,700	457.374	161.35	10.17	9.84	21,394
5	Hub	3.98	3.51	3.37	21,400	47.114	13.07	11.52	11.06	47,200
5	Cooler Top	3.90	3.38	2.37	1,000	31.241	12.80	11.09	7.78	2,206
CBM each						675.845				
Total CBM						7,952.964				
Total KGS						619,000.00				

Commodity: V90 1.8MW Wind 95M Towers – Graph B

		Dimensions (Meters and Kgs)					Dimensions (Feet and lbs)			
Qty	Description	Length	Width	Height	Weight	Volume	Length	Width	Height	Weight
5	Top Section	24.38	3.12	3.12	28,000	237.325	79.99	10.24	10.24	61,729
5	Upper Mid Section	24.36	3.37	3.37	43,500	276.654	79.92	11.06	11.06	95,901
5	Lower Mid Section	24.36	3.93	3.93	63,500	376.238	79.92	12.89	12.89	139,994
5	Base Section	20.00	4.48	4.48	70,500	401.408	65.62	14.70	14.70	155,426
CBM each						1,291.625				
Total CBM						6,458.123				
Total KGS						1,027,500.00				

2. Rail Siding Layout.

Trillium Rail Terminal – (Welland, ON)

Trillium Rail Terminal is located approx 135 km S of Toronto, ON or 40 km NW of Buffalo, NY. The rail yard is accessible from O'Reilly's Rd and Niagara #27. It is a secure facility with access to switches by engines. It has two offloading spurs and some acreage for operation and storage. It has multiple tracks available for storage of loaded and empty cars. It is a gated facility, but does not have 24hr security. Transera has performed a survey on this rail siding and is available upon request.

A. Storage Area

There is approximately 6 acres of land available owned by the rail terminal located in northwest corner of the yard. It would require some minor modification (leveling, gravel). .

In addition to the above acreage, there is also a small parcel of land located directly west. This area is approximately 3 acres. It is surrounded by a small, barbed wire fence. It contains debris, rail ties, and various rail materials, all of which would have to be removed or relocated. It is gravel base and would only require minor modifications.

There is another area that could be developed for storage. The acreage is unknown at this point. This area would require modifications such as deforestation, leveling and addition of material for compaction.

3. Offloading of rail car specifications and requirements.

The rail yard is currently a gravel base that has been in place for a number of years. Both potential offloading spurs would require minor modifications/cleanup. There are piles of debris/materials/equipment that would have to be relocated/removed prior to operations.

4. Routing of towers/turbines to site.

From Welland-HAF Project

All loads from Trillium Rail Siding

- Turn left on County Rd #27 and travel 19.5kms
- Turn left on County Rd #65 and travel 13.2kms
- Turn right at Caistor Centre Rd and travel 3.0kms
- Turn left at Sixteen Rd and travel 5.3kms

This routing brings all loads from Trillium Rail Siding near O'Reillys Bridge, ON to site near Abingdon, ON. This routing would put all loads east of Turbines 1, 2, & 4 and west of Turbines 3 and 5 based on map provided. This is not routing for base section that would be coming from Pueblo, CO.

From Welland-Wainfleet Project

All loads from Trillium Rail Siding

- Turn left on County Rd #27 and travel 5.3kms
- Turn left on County Rd #24 and travel 3.9kms
- Continue on Hwy #3 East and travel 4.1kms

For Turbines 1, 2, and 3

- Turn right on Abbey Road for turbines 1, 2 and 3

For Turbines 4, and 5

- Continue on Hwy #3 east for 2kms
- Turn right on Concession 1 and travel 750m
- Turn left on Station road and travel 1-2kms

This routing brings all loads except base sections to each pad entrance as per the map provided. This routing is not for base section that would be coming from Pueblo, CO

5. Turbine transport obstacles along the route.

All components exiting Trillium Railhead will be required to make westbound turn onto County Rd#27. This turn will require some modifications. Modifications required include widening of turn (both inside and outside radius) and the addition of gravel.

Once on County Rd #27, components will make multiple turns to sites near Abingdon and Wainfleet, ON. Transera feels that all of these turns can be made. All based on MTO permit approval, which will dictate routing for all components.

6. Proposed site report.

A. Site road.

The site roads have yet to be built. Based on the map provided, Transera was able to get to the general wind farm boundaries. Transera feels that cargo can reach general area, however, once site entrances are selected, another survey would have to be performed.

7. Conclusion.

The overall perspective for the route from Trillium-Welland to the proposed site is in good order. There are some bridges along routes to both sites. The MTO may require inspections and approval. Transera has witnessed other cargo use some of these bridges, indicating that permitting could be obtained. All information is based on the assumption that Ministry of Transportation Ontario will issue permits for the intended equipment for which we are not expecting any issues to arise. **NOTE: THIS PRELIMINARY SURVEY DOES NOT INCLUDE THE 95M BASE SECTION ROUTING FROM PUEBLO, CO TO SITE.**

8. Picture Summary.

1. Trillium Rail Siding Layout.
2. Trillium Rail Siding Offloading Spur
3. Trillium Rail Siding Storage
4. Trillium Rail Siding Entrance Exit
5. Corner O'Reillys Rd and County Rd #27
6. Corner of County Rd #27 and County Rd #65
7. Corner of County Rd #65 Caistor Centre Rd
8. Corner of Caistor Centre Rd and Sixteen
9. Corner of Hwy #3 and Abbey Rd
10. Corner of Concession 1 and Station Rd
11. Maps

Trillium Rail Siding - Welland



Offloading Spurs
Spur 1



Spur 2



Storage/Laydown
Main



Additional Storage



Entrance



Corner of County Rd #27 & O'Reillys Rd



Corner of County Rd #27 & County Rd #65



Corner of County Rd #65 & Caistor Centre Rd



Caistor Centre Rd & Sixteen



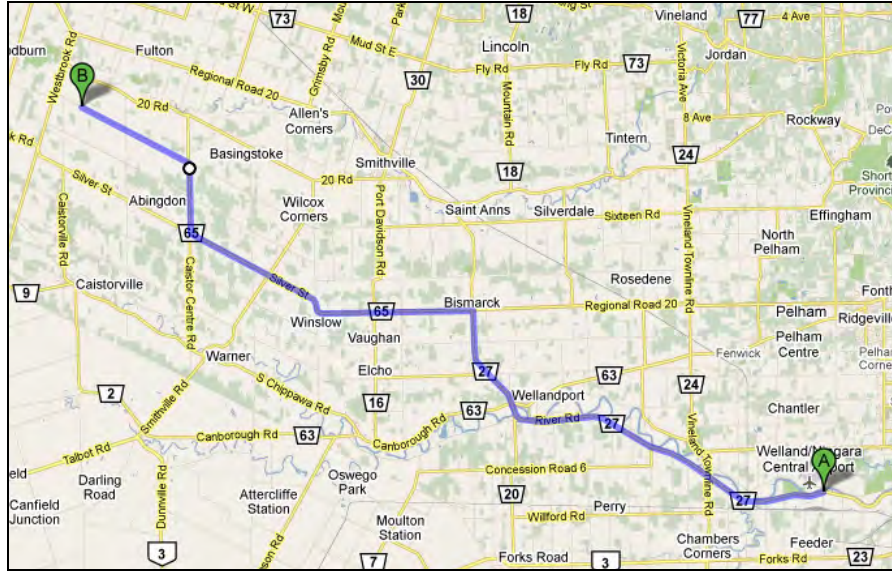
Hwy #3 & Abbey Rd



Concession 1 & Station Rd



Maps
Trillium to HAF



Trillium to Wainfleet

